



HAPP HEREFORDS

Female Sale

VOLUME III

Sunday, September 12, 2021

1 P.M. CDT • MENDOTA, ILLINOIS



HAPP MJH 945 INSTYLE 1115

Swigart

elite champions ✦ foundation genetics

welcome to

Happ Herefords

Welcome to Happ Herefords' 3rd Annual Production Sale. Another year has come and gone with the blink of an eye! It truly is amazing how time flies around here with three boys running around and keeping us busy.

This year we have loaded the sale with quality top to bottom, and there are some truly unique opportunities. As you look through the catalog, notice that so many of the cattle trace back to some of the most popular and winningest pedigrees in the Hereford breed. I've talked to several past customers, and time and time again they tell me the same thing—that they are very pleased with the cattle they have bought from us, or we hear "these cattle are real producers." I love to hear that our cattle go out and work for other programs. I know that we have worked with some of you in the past, and we appreciate the friendships we have made. Know that if we can be of any assistance to you with your purchase, we are more than happy to help out in any way we can, whether it be feeding questions, daily care, or fitting services. Also if you need help with breeding, don't hesitate to let us know.

This year we have included cattle from Spinazola Cattle, Barron Road Herefords and Petersen Herefords. We want to thank them for their partnership and friendship throughout the years and look forward to working together for years to come to offer a high quality group of cattle.

I'd like to thank everyone who helps out around here to not only make this sale happen but to make Happ Herefords what it is. Andrew is here every day and pretty well keeps this place moving in the right direction—and I know I don't thank him enough for that. Special thanks to Sara and Molly for always showing up to help whenever we need an extra hand, as well as Luke, Jack, Adam and Jimmy for their expertise on picture day. Also I couldn't go without thanking my family for all their help, love and support. So thank you to all of you!

We'd like to welcome you to our farm for the sale Sunday, September 12th. Lunch will be available, starting at 11:30. If you cannot attend in person, online bidding will be available through liveauctions.tv for your convenience. If you are in the area, come out the day before to look through the cattle. We will have supper the night before as well, and there will be plenty. Thank you for your interest, and let me know if there is anything I can help with. We hope to see you September 12th.

Chris Happ & Family



HAPP HEREFORDS

Chris Happ 815.823.6652

happ84@yahoo.com

Andrew Spinazola, Herdsman

309.313.2191

23817 Meridian Rd., Mendota, IL 61342

happherefords.com



Holden Wayne Happ
August 6, 2021

HAPP HEREFORDS

Female Sale

VOLUME III

Sunday, September 12th

1:00 p.m. CDT

23817 Meridian Road, Mendota, Illinois 61342

Sale Schedule

Cattle are available for viewing at your convenience.

SUNDAY, SEPTEMBER 12th

8:00 a.m.

Join us for coffee & pastries

11:30 a.m.

Lunch served

1:00 p.m.

Sale begins. This will be a video only sale with cattle on display at the sale site.

SALE DAY PHONES

CHRIS HAPP 815.823.6652

ANDREW SPINAZOLA 309.313.2191

SALE STAFF

DUSTIN LAYTON

Sale Manager/Auctioneer, 405.464.2455

ANDEE MARSTON

Layton Auction Services, 785.250.4449

JOHN MEENTS

American Hereford Assn., 419.306.7480

CODY CRUM

Livestock Plus, 217.248.7282

CRAIG REITER

PrimeTime AgriMarketing, 419.350.9159

Hotel Accommodations

Hampton Inn & Suites — 4421 Peoria St., Peru, IL 61354, 815.220.8400

Holiday Inn Express & Suites — 5253 Trompeter Rd., Peru, IL 61354, 815.224.2500

Fairfield Inn & Suites by Marriott — 4385 Venture Dr., Peru, IL 61354, 815.223.7458

Quality Inn & Suites — 1307 Kailash Dr., Mendota, IL 61342, 815.538.3355

Air Transportation

Midway Airport, Chicago, IL (100 miles) 1 hour, 45 minutes

Chicago O'Hare International Airport, Chicago, IL (92 miles) 1 hour, 45 minutes

Abraham Lincoln Capital Airport, Springfield, IL (138 miles) 2 hours, 15 minutes

Online Bidding



Margo Paeltz
937.515.1194

Sale Terms & Conditions

Cattle are offered for sale under the current Terms and Guarantees recommended by the American Hereford Association, which can be viewed online at www.hereford.org. Animals will be transferred to the buyer at the seller's expense after payment is received in full. Announcements made at the sale will supercede all printed material.

We reserve the right to withdraw any sale lot not meeting our specifications prior to sale time. EPDs were current as of 8/2/21, as reported by the American Hereford Association.

Note on Females

Happ Herefords reserves the right to two successful flushes consisting of six transferable embryos per flush on all females selling.

All persons who attend the sale do so at their own risk. Neither the owners, the sale manager nor any other person connected with the sale assumes liability, legal or otherwise, for accidents or loss of property.

Guest Consignors



Mike Thompson
630.338.9647

9N047 Barron Rd.

Maple Park, IL 60151

barronroadherefords.com

Spinazola Cattle

Andrew Spinazola Family

309.313.2191



ILLINOIS
AUCTION LICENSE
441002496

Sale managed by:

Dustin N. Layton • 405.464.2455

laytond@yahoo.com

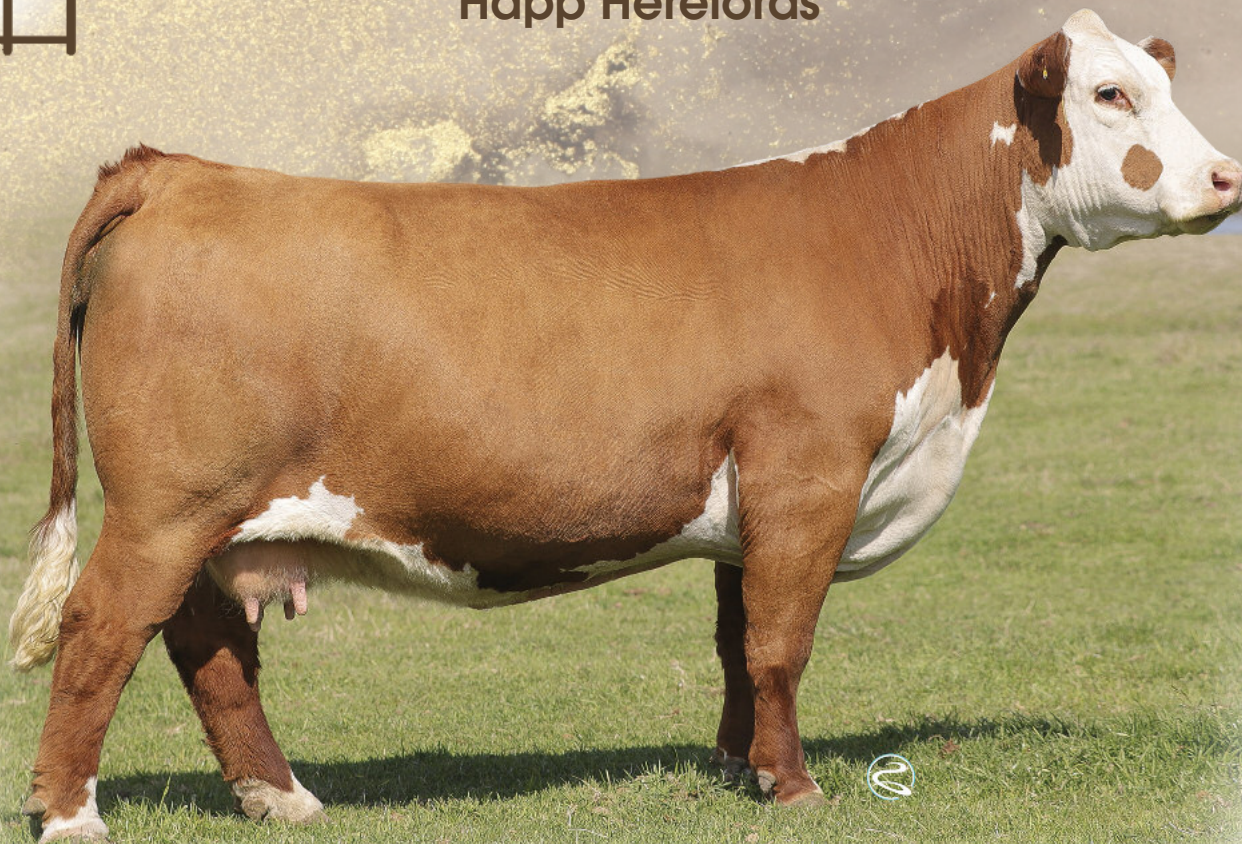
Andee Marston • 785.250.4449

laytonauction.com

SUNDAY, SEPTEMBER 12, 2021 • MENDOTA, ILLINOIS



Happ Herefords



Birthplace of

HAPP KOOL AID POINTS 1218 ET

2013 JNHE Grand Champion Horned Female

2014 NWSS Junior Show Grand Champion Horned Female

2013 NWSS Junior Show Reserve Grand Champion Horned Female

*Kool Aid has now produced seven National Champions and over \$1 million in progeny sales to date
...including the 2021 Junior National Hereford Expo Grand Champion Horned Female!*

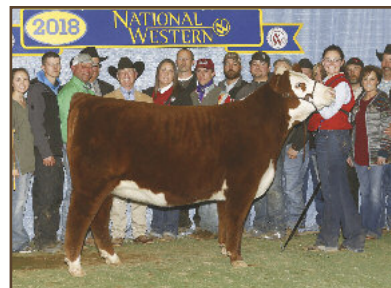


Daughter of Happ Kool Aid Points 1218 ET

...2021 JNHE Division IV Champion and Grand Champion Horned Heifer



*Daughter of Happ Kool Aid Points 1218 ET
...2017 JNHE Grand Champion
Horned Heifer*



*Daughter of Happ Kool Aid Points 1218 ET
...2018 NWSS Grand Champion
Horned Heifer*

Sale catalog & advertising prepared by Layton Auction Services, LLC, 405.464.2455

Produced by Southwest TypeStyles, 405.317.1743

*At this summer's Junior National Hereford Expo in Kansas City,
the Grand Champion Horned Female, three division champions and two reserve division champions
were out of donor dams produced in the Happ program!*

HAPP KOOL AID POINTS 1218 ET...

(daughter of Crane Style Points 945)

Horned Division IV Champion and Grand Champion Horned Heifer – Kynlee Dailey
Polled Division IX Reserve Champion Heifer – Fallon Gohr

HAPP MIRAGE 1327...

(daughter of Happ MJH 945 InStyle 1115 and granddaughter of Crane Style Points 945)

Horned Division III Champion Heifer – Hayes Devine
Horned Division IV Reserve Champion Heifer – Kinnick Paulsen

HAPP SWEET ANNIE 4A ET...

(daughter of MCR PPF Miss Gold Dom 206 ET)

Polled Division II Champion Heifer – Kynlee Dailey



Daughter of Happ Kool Aid Points 1218 ET
...2021 JNHE Polled Division IX Reserve Champion Heifer



Daughter of Happ Mirage 1327
...2021 JNHE Horned Division III Champion Heifer



Daughter of Happ Mirage 1327
...2021 JNHE Horned Division IV Reserve Champion Heifer



Daughter of Happ Sweet Annie 4A ET
...2021 JNHE Polled Division II Champion Heifer

Congratulations to these and the many other champions that descend from Happ genetics!



CRANE STYLE POINTS 945

The foundation donor dam at Happ Herefords

- **CRANE STYLE POINTS 945** was purchased privately from Crane Herefords as a calf in the fall of 2009. She was shown successfully, winning many of the local and state shows. We had the misfortune of losing Style Points last year, but the imprint she left on the Happ Herefords operation and the Hereford breed lives on. To date, Style Points 945 has produced over \$250,000 in progeny and frozen genetics sales.
- 945's first calf, Happ MJH InStyle 1115, has become a mainstay donor at Happ Herefords to take over her dam's legacy. There are 10 daughters plus a flush offered out of this prolific donor in this catalog. As you view her descendants, you will see why we are so high on our 2021 cover female and are confident in her ability to carry on her dam's legacy.
- Happ Kool Aid Points 1218 ET was purchased from us by Jiri Buck and today is a household name in the Hereford breed. Bailey Buck exhibited Kool Aid Points to multiple championships, including the Junior National. She is now a prominent donor for Buck Cattle Co., producing multiple national champions and high sellers. A daughter and granddaughters sell September 12.

Take advantage of the opportunity to purchase the genetics of this time-tested donor and her descendants and put them to work in your program.

Come get your next National Champion and future donor all in one!



Open Heifer Prospect



lot 1

*full sisters sell as
lots 1 and 2*

HAPP BK VALOR 37C ET
sire of Lots 1-3



1

Happ 1826 *Jewel* **50J**

cow

3/26/21 • P44271101 • tattoo: LE 50J • polled

HAPP EXTRA POINT 1220 ET
HAPP BK VALOR 37C ET
JSF 12N LADY VAL 9T

R NEW YORK 4243
R MISS NEW YORK 1826
HR MISS DOMINO 738 {DOD}

DELHAWK KAHUNA 1009 ET
CRANE STYLE POINTS 945
GHC BEAR 12N
HSF 60G LADY VAL 48K
SHF YORK 19H Y02 {SOD,CHB}
R MISS ON TARGET 3151
N 9126J DOMINO 514 {SOD}
HR MISS NAVIGATE 566 {DOD}

CED	BW	WW	YW	MILK	CW	REA	MARB	SCHB
+1.1	+2.8	+62	+87	+25	+80	+.44	+.04	+108

- What a way to lead off the Happ Herefords Vol. III Female Sale catalog with this stylish yet powerful pair of sisters sired by the ever-popular Happ BK Valor 37C ET and out of the new, up-and-coming donor at Happ Herefords, R Miss New York 1826, purchased by Chris as a heifer calf from the storied Rausch program in South Dakota.
- Jewel is flawless in her design and build with tremendous sweep to her rib, added bone, a super feminine look, structural integrity and a beautiful, feminine head. This polled late March heifer will become like many of the other Happ Hereford females that have sold in years past—a tremendous producer of champions. Females of this stature that combine power and design yet still have that big time donor look with the pedigree to back it up are hard to come by.
- Remember—this past summer at the JNHE held in Kansas City, Happ Hereford females produced the Grand Champion Horned Female, three division champions and two reserve division champions. That, folks, is called power in the blood!
- Full sister sells as Lot 2.
- Sells open.

Open Heifer Prospect



lot 2



JSF 12N LADY VAL 9T
paternal granddam of
Lots 1 & 2

2

Happ 1826 *Jemma* 51J

COW

3/26/21 • P44271102 • tattoo: LE 51J • polled

HAPP EXTRA POINT 1220 ET
HAPP BK VALOR 37C ET
JSF 12N LADY VAL 9T

R NEW YORK 4243
R MISS NEW YORK 1826
HR MISS DOMINO 738 {DOD}

DELHAWK KAHUNA 1009 ET
CRANE STYLE POINTS 945
GHC BEAR 12N
HSF 60G LADY VAL 48K
SHF YORK 19H Y02 {SOD,CHB}
R MISS ON TARGET 3151
N 9126J DOMINO 514 {SOD}
HR MISS NAVIGATE 566 {DOD}

CED	BW	WW	YW	MILK	CW	REA	MARB	SCHB
+1.1	+2.8	+62	+87	+25	+80	+44	+04	+108

- Jemma resembles her sister in many ways, as she too portrays that show ring look when viewed from the side. She is very feminine through her head and neck while displaying superb balance from front to rear. So good at the ground with big feet and legs, Jemma will be fun to show and even more exciting to mate. Both of these sisters display picture-perfect teat size and placement. On September 12, we will only begin to scratch the surface of these females' true value!
- Full sister sells as Lot 1.
- Sells open.



Open Heifer Prospect



lot 3

10 daughters of
InStyle 1115 sell

HAPP MJH 945
INSTYLE 1115
dam of Lots 3-9,
21, 34 & 42...
flush sells as Lot 19



3

Happ 1115 *Stylin* 58J ET

COW

4/20/21 • 44271108 • tattoo: LE 58J • horned

HAPP EXTRA POINT 1220 ET
HAPP BK VALOR 37C ET
JSF 12N LADY VAL 9T

CRR ABOUT TIME 743 {SOD}
HAPP MJH 945 INSTYLE 1115
CRANE STYLE POINTS 945

DELHAWK KAHUNA 1009 ET
CRANE STYLE POINTS 945
GHC BEAR 12N
HSF 60G LADY VAL 48K
THM DURANGO 4037 {SOD}
CRR D03 CASSIE 206
CH 372 POT OF GOLD 7120 ET
CH MISS DIAL 6311

CED	BW	WW	YW	MILK	CW	REA	MARB	SCHB
+2.3	+2.8	+63	+97	+21	+81	+.59	+.01	+109

- Stylin is a fitting name for this April horned heifer! Just analyze the sweep to her underline, stoutness of hip, correctness of lines and flat out killer look she possesses. Pedigree alone will get you excited about Stylin! A full sib to Stylin was a feature in the 2020 sale and commanded \$10,000 for 1/2 interest.
- Stylin is a direct daughter of the impressive Instyle 1115, who has certainly stepped up to replace her donor dam, Style Points 945, who unfortunately passed last year.
- A maternal sister to Stylin produced two Horned division champions at the 2021 JNHE. Not only will this April horned heifer be ultra-competitive in the show ring, but the investment in her alone will be worth the ride.
- Full sister sells as Lot 34. Maternal sisters sell as Lots 4-9, 21 and 42. Dam's flush sells as Lot 19.
- Sells open.

Open Heifer Prospect



Swigart

lot 4

maternal sisters sell as

lots 3-9

**B&C STOCK OPTION
6026D ET**
sire of Lot 4



4

Happ 1115 *Back In Style* 1J ET

COW

1/1/21 • 44271067 • tattoo: LE 1J • horned

C STOCKMAN 2059 ET {CHB,SOD}
B&C STOCK OPTION 6026D ET
B&C MISS TOP GUN 2031Z 1ET

CRR ABOUT TIME 743 {SOD}
HAPP MJH 945 INSTYLE 1115
CRANE STYLE POINTS 945

NJW 98S R117 RIBEYE 88X ET {SOD,CHB}
C NOTICE ME ET
GH ADAMS TOP GUN ET 516T {CHB}
B&C MS CHRISTI 27031
THM DURANGO 4037 {SOD}
CRR D03 CASSIE 206
CH 372 POT OF GOLD 7120 ET
CH MISS DIAL 6311

CED	BW	WW	YW	MILK	CW	REA	MARB	SCHB
+1.3	+3.9	+58	+92	+26	+76	+64	+07	+119

- If you like big footed, big legged, stout hipped horned heifers with a "wow" look, this direct daughter of the former National Champion Horned Bull Stock Option and out of the prominent donor InStyle is your kind of female. You have to appreciate this heifer's balance and clean chest for the amount of power she displays. This female is built right for the times and will be super competitive at the highest level.
- Maternal sisters sell as Lots 3, 5, 6, 7, 8, 9, 21, 34 and 42. Dam's flush sells as Lot 19.
- Sells open.



Open Heifer Prospects



lot 5

full sisters sell as
lots 5-9



lot 6

5

Happ 1115 *Miss Styles* 32J ET

COW

2/13/21 • P44271090 • tattoo: LE 32J • polled

UPS SENSATION 2296 ET
H MONTGOMERY 7437 ET
RST GAT NST Y79D LADY 54B ET

CRR ABOUT TIME 743 {SOD}
HAPP MJH 945 INSTYLE 1115
CRANE STYLE POINTS 945

CHURCHILL SENSATION 028X {SOD}
UPS JT MISS NEON 7811 1ET
WORR OWEN TANKERAY Y79D ET
H H LADY MAXIUM 111 ET
THM DURANGO 4037 {SOD}
CRR D03 CASSIE 206
CH 372 POT OF GOLD 7120 ET
CH MISS DIAL 6311

CED	BW	WW	YW	MILK	CW	REA	MARB	SCHB
+3.0	+3.4	+61	+97	+31	+74	+60	-.03	+105

- Miss Styles is the first of five flush sisters sired by the sire of recent champions Montgomery and out of the popular Happ Herefords donor InStyle 1115. Each sister is very intriguing in her own right and offers elite quality in different types of packages.
- Miss Styles is dark red, stout featured, super correct in her lines and puts it all together in a very eye-appealing package. A power cow with style in the making!
- Full sisters sell as Lots 6-9. Maternal sisters sell as Lots 3, 4, 21, 34 and 42. Dam's flush sells as Lot 19.
- Sells open.

6

Happ 1115 *Old Style* 35J ET

COW

2/15/21 • 44271091 • tattoo: LE 35J • horned

UPS SENSATION 2296 ET
H MONTGOMERY 7437 ET
RST GAT NST Y79D LADY 54B ET

CRR ABOUT TIME 743 {SOD}
HAPP MJH 945 INSTYLE 1115
CRANE STYLE POINTS 945

CHURCHILL SENSATION 028X {SOD}
UPS JT MISS NEON 7811 1ET
WORR OWEN TANKERAY Y79D ET
H H LADY MAXIUM 111 ET
THM DURANGO 4037 {SOD}
CRR D03 CASSIE 206
CH 372 POT OF GOLD 7120 ET
CH MISS DIAL 6311

CED	BW	WW	YW	MILK	CW	REA	MARB	SCHB
+3.0	+3.4	+61	+97	+31	+74	+60	-.03	+105

- Old Style is the only horned female among these five flush mate sisters. Elite in every facet with added hip, bone and style, Old Style displays a big turn to the top side of her rib cage and carries a tremendous amount of true shape down through her lower 1/3. Powerful yet elegant, this horned female will be one to watch throughout her show career.
- Full sisters sell as Lots 5, 7, 8 and 9. Maternal sisters sell as Lots 3, 4, 21, 34 and 42. Dam's flush sells as Lot 19.
- Sells open.

Open Heifer Prospects



lot 7

7 Happ 1115 *Jungle Style* 36J ET

COW 2/16/21 • P44271092 • tattoo: LE 36J • polled

UPS SENSATION 2296 ET
H MONTGOMERY 7437 ET
RST GAT NST Y79D LADY 54B ET

CRR ABOUT TIME 743 [SOD]
HAPP MJH 945 INSTYLE 1115
CRANE STYLE POINTS 945

CHURCHILL SENSATION 028X [SOD]
UPS JT MISS NEON 7811 1ET
WORR OWEN TANKERAY Y79D ET
H H LADY MAXIMUM 111 ET
THM DURANGO 4037 [SOD]
CRR D03 CASSIE 206
CH 372 POT OF GOLD 7120 ET
CH MISS DIAL 6311

CED	BW	WW	YW	MILK	CW	REA	MARB	SCHB
+3.0	+3.4	+61	+97	+31	+74	+60	-.03	+105

- Jungle Style is built right from the ground up with a high neck attachment, which adds to her eye appeal. Moderate in her design and very correct in her lines, this sound structured female has that show ring presence. Jungle Style will be an impressive individual in production also.
- Full sisters sell as Lots 5, 6, 8 and 9. Maternal sisters sell as Lots 3, 4, 21, 34 and 42. Dam's flush sells as Lot 19.
- Sells open.



lot 8

8 Happ 1115 *Just Style* 20J ET

COW 1/25/21 • P44271087 • tattoo: LE 20J • polled

UPS SENSATION 2296 ET
H MONTGOMERY 7437 ET
RST GAT NST Y79D LADY 54B ET

CRR ABOUT TIME 743 [SOD]
HAPP MJH 945 INSTYLE 1115
CRANE STYLE POINTS 945

CHURCHILL SENSATION 028X [SOD]
UPS JT MISS NEON 7811 1ET
WORR OWEN TANKERAY Y79D ET
H H LADY MAXIMUM 111 ET
THM DURANGO 4037 [SOD]
CRR D03 CASSIE 206
CH 372 POT OF GOLD 7120 ET
CH MISS DIAL 6311

CED	BW	WW	YW	MILK	CW	REA	MARB	SCHB
+3.0	+3.4	+61	+97	+31	+74	+60	-.03	+105

- Just Style is the only January-born female among these five flush mate sisters. Just look at the bone size and true muscle shape she displays. Short marked and red to the ground, and what she will look like as a four-year-old one can only imagine. Just Style has the color, length, size, stoutness and bone that will complement many of the mainstream AI bulls popular today. The InStyle progeny are productive, high end donors, as proven over time.
- Full sisters sell as Lots 5, 6, 7 and 9. Maternal sisters sell as Lots 3, 4, 21, 34 and 42. Dam's flush sells as Lot 19.
- Sells open.

9 Happ *Jamaican Style* 30J ET

COW 2/2/21 • P44271089 • tattoo: LE 30J • polled

UPS SENSATION 2296 ET
H MONTGOMERY 7437 ET
RST GAT NST Y79D LADY 54B ET

CRR ABOUT TIME 743 [SOD]
HAPP MJH 945 INSTYLE 1115
CRANE STYLE POINTS 945

CHURCHILL SENSATION 028X [SOD]
UPS JT MISS NEON 7811 1ET
WORR OWEN TANKERAY Y79D ET
H H LADY MAXIMUM 111 ET
THM DURANGO 4037 [SOD]
CRR D03 CASSIE 206
CH 372 POT OF GOLD 7120 ET
CH MISS DIAL 6311

CED	BW	WW	YW	MILK	CW	REA	MARB	SCHB
+3.0	+3.4	+61	+97	+31	+74	+60	-.03	+105

- Jamaican Style is one you need to visually appraise in person to appreciate just how good she is. Tremendous depth of body in this individual with a beautiful, feminine designed head. This may be the easiest fleshing individual among her flush mate sisters and without question is going to be one powerful, well balanced, big time donor. What an elite set of flush sisters out of the immortal 1115 and sired by Montgomery Happ Herefords has produced for your appraisal!
- Full sisters sell as Lots 5–8. Maternal sisters sell as Lots 3, 4, 21, 34 and 42. Dam's flush sells as Lot 19.
- Sells open.



lot 9



Open Heifer Prospect



lot 10

direct daughter of Val 9T



JSF 12N LADY VAL 9T
dam of Lot 10

10

Happ 9T *Lady Joy* 5J ET

cow

1/4/21 • 44271074 • tattoo: LE 5J • horned

NJW 73S W18 HOMETOWN 10Y ET {SOD,CHB} SHF WONDER M326 W18 ET {CHB,SOD}
AMC 0103 10Y TOWN HALL 1D {CHB} NJW P606 72N DAYDREAM 73S
 H W4 MARIAH 0103 ET GOLDEN OAK OUTCROSS 18U {SOD}
 • {MDP} HH MISS ADVANCE 316N 1ET
 GHC BEAR 12N
JSF 12N LADY VAL 9T GHC CHUNK 113L
 HSF 60G LADY VAL 48K JSF 23 NIBBS 60G
 JSF 2Z VALRIE 25B

CED	BW	WW	YW	MILK	CW	REA	MARB	\$CHB
+2.9	+2.3	+54	+89	+25	+82	+63	+03	+124

- A direct daughter of 9T, the feature donor in the inaugural live sale at Happ Herefords. Lady Joy is dark cherry red, red necked, red to the ground and goggle eyed—just like her dam but in a stouter designed package. 9T is now deceased, and the opportunity to acquire her genetic lineage is going to be harder to come by. Elite maternal strength coupled with value-added amenities make Lady Joy a must have!
- Full sisters sell as Lots 39 and 40. Maternal sisters sell as Lots 25, 29 and 32.
- Sells open.

Open Heifer Prospect



lot 11

11

Happ 6036 *Dot Game* 3J ET

COW

1/3/21 • 44271072 • tattoo: LE 3J • horned

HAPP EXTRA POINT 1220 ET

HAPP BK VALOR 37C ET

JSF 12N LADY VAL 9T

NJW 98S R117 RIBEYE 88X ET {SOD,CHB}

BK DOTTIE DAWN 6036D ET

HAPP KOOL AID POINTS 1218 ET

DELHAWK KAHUNA 1009 ET

CRANE STYLE POINTS 945

GHC BEAR 12N

HSF 60G LADY VAL 48K

SHF RIB EYE M326 R117 {CHB,SOD}

NJW 9126J DEW DOMINO 98S {DOD}

DELHAWK KAHUNA 1009 ET

CRANE STYLE POINTS 945

CED	BW	WW	YW	MILK	CW	REA	MARB	SCHB
+7.9	+0.4	+56	+83	+25	+72	+59	+21	+115

• Dot Game is a stout featured, super cool designed female that has that "wow" factor. This January horned heifer is big legged, big hiped, level topped and ultra-feminine for as much substance and power as she possesses. When you study her EPD profile, you see calving ease, maternal strength and value-added carcass merit. Her dam, Dottie Dawn, has been a successful donor in the Happ program and is a sale feature in this offering.

- Dam sells as Lot 24. Maternal sister sells as Lot 24A.
- Sells open.



BK DOTTIE DAWN 6036D ET

dam of Lot 11...sells as Lot 24



HAPP HEREFORDS began in 2007 when Chris purchased a small herd of Hereford cattle from an elderly neighbor. After calving out this older herd, Chris set out in search of sound, attractive, maternal females to serve as the foundation of his own herd. Along with his wife, Janell, and their four children, Chris still places emphasis on those qualities.

Happ cattle not only go on to make beautiful, productive mothers, but many have also enjoyed success at the highest levels in show rings across the country. We pride ourselves on producing eye-appealing, attractive females that will make you just as proud in the pasture as in their backdrop photo.

Feel free to call or stop by for a visit at the farm anytime and online 24/7 at happherefords.com.



Open Heifer Prospect & Embryos



lot 12

maternal sib embryos
to lot 12
sell as lot 12A

lot 12A
EMBRYO DONOR
BK EVEY 7119E



12

BK *Jokester* 7119J

COW

3/8/21 • P44238478 • tattoo: LE 7119J • polled

BR NITRO AVENTUS 3116 ET
ECR 3116 ADVENTURE 7647 ET
ECR MISS SENSATION 4356 ET

CHURCHILL SENSATION 028X {SOD}
BK EVEY 7119E
BK COOL BEANS 5103C ET

UPS TCC NITRO 1ET {SOD}
BR ABIGAIL 8130 ET
UPS SENSATION 2296 ET
ECR LADY FLOW 212ET
UPS DOMINO 3027 {CHB,SOD}
CHURCHILL LADY 7202T ET
KCL WPF THE PROFESSOR 7110ET
HAPP KOOL AID POINTS 1218 ET

CED	BW	WW	YW	MILK	CW	REA	MARB	SCHB
+5.9	+0.8	+54	+81	+32	+62	+49	+07	+100

- Jokester and her dam were Happ Herefords' pick of the spring pairs in the Buck Cattle Co. Female Sale this past May. Jokester is sired by the Buck Cattle Co. resident herd sire Adventure, purchased by Jirl out of the Fawcett's Elm Creek Ranch bull sale. His sire group was very popular at Buck's, and when you analyze this female it is easy to see why. Jokester is dark red, short marked, red eyed, stout hipped, super correct and loaded with style. This is a female Happ Herefords should be retaining, but Chris has put his best foot forward in offering his BEST!

- Sells open.

12a

Marksman x *Evey* 7119E

embryos

3 IVF sexed female embryos

UPS SENSATION 2296 ET
KLD RW MARKSMAN D87 ET
RW MINDY 3078 6096

CHURCHILL SENSATION 028X {SOD}
BK EVEY 7119E
BK COOL BEANS 5103C ET

CHURCHILL SENSATION 028X {SOD}
UPS JT MISS NEON 7811 1ET
RW KW HUMMER K23 3078
RW DEDE 23C 9145
UPS DOMINO 3027 {CHB,SOD}
CHURCHILL LADY 7202T ET
KCL WPF THE PROFESSOR 7110ET
HAPP KOOL AID POINTS 1218 ET

Proj.	CED	BW	WW	YW	MILK	CW	REA	MARB	SCHB
EPDs:	+5.1	+1.2	+52	+76	+33	+60	+53	+05	+96

- Offering sexed female embryos out of the new Happ Herefords donor 7119E, purchased from Buck Cattle Co. 7119E is a beautifully designed Churchill Sensation 028X daughter that is equipped with a gorgeous udder.
- Maternal sib embryos to Lot 12.
- Offering a package of three IVF sexed female embryos sired by Marksman. Guarantee of one pregnancy if put in by a certified embryologist.

Open Heifer Prospects



lot 13



lot 14

13

Spin *Sweet Red Lashes*

COW

3/17/21 • P44271471 • tattoo: LE 2103 • polled

CHURCHILL SENSATION 028X [SOD]
CMCC DA COWBOY POINTS 695C
HAPP GAME POINT 14B

CRR ABOUT TIME 743 [SOD]
CHEZ ABOUT WINE 9899G ET
R SWEET RED WINE 039

UPS DOMINO 3027 [CHB,SOD]
CHURCHILL LADY 7202T ET
NJW 98S R117 RIBEYE 88X ET [SOD,CHB]
CRANE STYLE POINTS 945
THM DURANGO 4037 [SOD]
CRR D03 CASSIE 206
MSU TCF REVOLUTION 4R [SOD]
R MISS WRANGLER 207

CED	BW	WW	YW	MILK	CW	REA	MARB	SCHB
+4.8	+1.6	+52	+81	+26	+61	+46	+12	+106

- Sweet Red Lashes is a fitting name for this red necked, red legged, goggle-eyed, beautifully designed female. If you like your females elegant yet with power and substance, you will love this one.
- Her dam is a full sister to the immortal Strawberry Wine, one of the influential and unique show heifers and donors of her era. The sire, Cowboy Points, passed last fall, and this mating more than likely will not be recreated. Grab on to this elite female backed by elite, time-tested, proven genetics!
- Offered by Spinazola Cattle.
- Sells open.

14

WRB Spin *Savannah*

COW

3/10/21 • 44271458 • tattoo: LE 2102 • horned

CHURCHILL SENSATION 028X [SOD]
CMCC DA COWBOY POINTS 695C
HAPP GAME POINT 14B

PURPLE COBAIN 30D ET
SPIN WRB RAYNE 319 ET
WRB PORSHIA 1014

UPS DOMINO 3027 [CHB,SOD]
CHURCHILL LADY 7202T ET
NJW 98S R117 RIBEYE 88X ET [SOD,CHB]
CRANE STYLE POINTS 945
CRR 719 CATAPULT 109 [SOD]
PURPLE COTTON 40T ET
DELHAWK WRBJTH UNIVERSAL2311ET
WRB LEAH 1710 ET

CED	BW	WW	YW	MILK	CW	REA	MARB	SCHB
+3.5	+2.5	+58	+92	+29	+67	+55	+07	+112

- Savannah is a super attractive, well designed horned female equipped with a top notch EPD profile. She is super correct in her lines, short marked and loaded with pigment and style. Her dam is a paternal sister to the Lot 1 feature high seller in last year's sale. Savannah is a direct daughter of the now-deceased resident herd sire Cowboy Points, whose dam is a maternal sister to the former National Champion Female Kool Aid Points, who continues to consistently produce champions, including the Grand Champion Horned Female at the 2021 Junior National Hereford Expo.
- Offered by Barron Road Herefords and Spinazola Cattle.
- Sells open.



Open Heifer Prospects



lot 15

full sisters sell as
lots 15 and 16



lot 16

15

Happ *Spotty* 14J

COW

1/16/21 • P44271081 • tattoo: LE 14J • polled

CHURCHILL SENSATION 028X {SOD}
CMCC DA COWBOY POINTS 695C
HAPP GAME POINT 14B

HAPP BK VALOR 37C ET
HAPP FREE SPIRIT 1804 ET
HAPP CELESTE 1307

UPS DOMINO 3027 {CHB,SOD}
CHURCHILL LADY 7202T ET
NJW 98S R117 RIBEYE 88X ET {SOD,CHB}
CRANE STYLE POINTS 945
HAPP EXTRA POINT 1220 ET
JSF 12N LADY VAL 9T
DELHAWK KAHUNA 1009 ET
HH MISS ADVANCE 9086W

CED	BW	WW	YW	MILK	CW	REA	MARB	\$CHB
+2.4	+2.1	+54	+84	+27	+68	+54	+12	+108

- Spotty has all the amenities that drive value today, being red legged, red necked, goggle eyed and built right from the ground up. The style and EPD profile she possesses make her a valuable breeding piece. Tie yourself to a program that has consistently produced cattle that excel in the show ring and in production.
- Full sister sells as Lot 16.
- Sells open.

16

Happ *Joyce* 15J

COW

1/16/21 • 44271082 • tattoo: LE 15J • horned

CHURCHILL SENSATION 028X {SOD}
CMCC DA COWBOY POINTS 695C
HAPP GAME POINT 14B

HAPP BK VALOR 37C ET
HAPP FREE SPIRIT 1804 ET
HAPP CELESTE 1307

UPS DOMINO 3027 {CHB,SOD}
CHURCHILL LADY 7202T ET
NJW 98S R117 RIBEYE 88X ET {SOD,CHB}
CRANE STYLE POINTS 945
HAPP EXTRA POINT 1220 ET
JSF 12N LADY VAL 9T
DELHAWK KAHUNA 1009 ET
HH MISS ADVANCE 9086W

CED	BW	WW	YW	MILK	CW	REA	MARB	\$CHB
+2.4	+2.1	+54	+84	+27	+68	+54	+12	+108

- Joyce is a super cool designed horned female with added bone and length. Chisel fronted and clean chested, she is very unique among her contemporaries. Sound on her feet and legs with show ring presence. Just imagine Joyce in production!
- Full sister sells as Lot 15.
- Sells open.

Open Heifer Prospects



lot 17



lot 18

17

Happ PH 8050 *Judy* 40J

COW

2/28/21 • P44271098 • tattoo: LE 40J • polled

CRR 109 CATAPULT 322

CRR 322 BELL 617

BRL WHIRL 59A

HAPP BK VALOR 37C ET

HAPP FANCY STYLE 8050F ET

HAPP MJH 945 INSTYLE 1115

CRR 719 CATAPULT 109 [SOD]

CRR 713 KELLY 0117

BOYD WORLDWIDE 9050 ET [SOD]

BRL ENVY 059Y

HAPP EXTRA POINT 1220 ET

JSF 12N LADY VAL 9T

CRR ABOUT TIME 743 [SOD]

CRANE STYLE POINTS 945

CED	BW	WW	YW	MILK	CW	REA	MARB	SCHB
+3.3	+1.3	+54	+83	+21	+64	+47	+08	+103

- Judy is a granddaughter of the immortal Happ donor InStyle 1115. Her sire is a calving-ease specialist that Chris acquired from the Coyote Ridge program in Colorado. A big boned female with tremendous upside in her prolific pedigree.
- Offered with Petersen Herefords.
- Sells open.

18

Spin *Brooke* 2105

COW

3/8/21 • P44272088 • tattoo: LE 2105 • polled

CRR 109 CATAPULT 322

CRR 322 BELL 617

BRL WHIRL 59A

TFR KU ROLL THE DICE 1326

SPIN BRIDGET 1801 ET

DELHAWK SAPPHIRE 109A ET

CRR 719 CATAPULT 109 [SOD]

CRR 713 KELLY 0117

BOYD WORLDWIDE 9050 ET [SOD]

BRL ENVY 059Y

STAR TCF LOCK-N-LOAD 300W ET

LH LANGFORD LADY 0253 ET

CRR ABOUT TIME 743 [SOD]

MCR PPF MISS GOLD DOM 206 ET

CED	BW	WW	YW	MILK	CW	REA	MARB	SCHB
+0.7	+2.2	+56	+87	+24	+67	+55	+09	+114

- Brooke stems from the immortal Gold Dom 206, who has produced countless champions either directly or through her daughters. Her dam is sired by the popular Roll The Dice.
- Well balanced and equipped with a great look. Pedigree alone makes this female very intriguing with very lucrative earning potential.
- Offered by Spinazola Cattle.
- Sells open.



Donor Flush & Embryos



HAPP MJH 945 INSTYLE 1115

Lot 19 flush donor & Lot 20 embryo donor...several daughters also sell

donor flush

19

Happ MJH 945 *InStyle* 1115

cow

3/18/11 • P43255278 • tattoo: LE 1115 • polled

THM DURANGO 4037 [SOD]
CRR ABOUT TIME 743 [SOD]
CRR D03 CASSIE 206

• [DLF, HYF, IEF]
CH 372 POT OF GOLD 7120 ET
CRANE STYLE POINTS 945
CH MISS DIAL 6311

CS BOOMER 29F [SOD]
THM 7085 VICTRA 9036
SHF INTERSTATE 20X D03 [SOD]
CRR 475E CASSIE 838
KP GOLD MINE 372
CH LADY PROPHET 0220
LF BH DIAL UP ET
CH LADY PROPHET 3226

CED	BW	WW	YW	MILK	CW	REA	MARB	SCHB
+3.5	+3.6	+63	+98	+21	+72	+48	-.07	+96

- InStyle 1115 has moved to the forefront of the Happ Herefords donor lineup with the passing of her donor dam, Style Points 945, last year. A daughter of InStyle 1115, Happ Mirage 1327, produced a division champion and a reserve at the 2021 JNHE Horned show for Hayes Devine and Kinnick Paulsen. InStyle is a genetic beast when you analyze this sale offering and see her progeny throughout the catalog. Her progeny are competitive in the show ring and are proven producers of champions.
- InStyle 1115 is a maternal sister to Happ Kool Aid Points, the renowned donor at Buck Cattle Co. that was a National Champion herself and has produced several National Champions, including the Grand Champion Horned Female at the 2021 JNHE.
- Chris is presenting a rare opportunity to dig deep into his genetic pool, as he is offering his best and most sought after genetics.
- Daughters sell as Lots 3-9, 21, 34 and 42.
- Selling a successful conventional or IVF flush consisting of six transferable embryos and one pregnancy if put in by a certified embryologist. The buyer is responsible for all costs associated with the flush. InStyle 1115 is open and ready to flush.

buyer's choice embryos

20a

***Dominate* x *InStyle* 1115**

embryos

buyer's choice • 3 IVF sexed female embryos

BCC DOMINATOR 619D [CHB]
SR DOMINATE 308F ET
CHURCHILL LADY 1162Y ET

CRR ABOUT TIME 743 [SOD]
HAPP MJH 945 INSTYLE 1115
CRANE STYLE POINTS 945

CL 1 DOMINO 215Z [CHB]
BCC MISS BELL 206Z
GOLDEN OAK OUTCROSS 18U [SOD]
DCC 8006 PATTI 4266 ET
THM DURANGO 4037 [SOD]
CRR D03 CASSIE 206
CH 372 POT OF GOLD 7120 ET
CH MISS DIAL 6311

Proj.	CED	BW	WW	YW	MILK	CW	REA	MARB	SCHB
EPDs:	+0.4	+4.3	+66	+111	+25	+84	+62	.00	+118

20b

***Marksman* x *InStyle* 1115**

embryos

buyer's choice • 3 IVF sexed female embryos

UPS SENSATION 2296 ET
KLD RW MARKSMAN D87 ET
RW MINDY 3078 6096

CRR ABOUT TIME 743 [SOD]
HAPP MJH 945 INSTYLE 1115
CRANE STYLE POINTS 945

CHURCHILL SENSATION 028X [SOD]
UPS JT MISS NEON 7811 1ET
RW KW HUMMER K23 3078
RW DEDE 23C 9145
THM DURANGO 4037 [SOD]
CRR D03 CASSIE 206
CH 372 POT OF GOLD 7120 ET
CH MISS DIAL 6311

Proj.	CED	BW	WW	YW	MILK	CW	REA	MARB	SCHB
EPDs:	+2.8	+3.2	+57	+87	+26	+65	+50	-.05	+92

- Embryos are stored at Happ Herefords.
- Guarantee one pregnancy if put in by a certified embryologist.

Fall Bred Heifer



lot 21

21

Happ *Gifted Style* 1932 ET

COW

9/5/19 • 44271154 • tattoo: LE 1932 • horned

UPS TCC NITRO 1ET {SOD}
BR NITRO AVENTUS 3116 ET
BR ABIGAIL 8130 ET

CRR ABOUT TIME 743 {SOD}
HAPP MJH 945 INSTYLE 1115
CRANE STYLE POINTS 945

GH NEON 17N {CHB,SOD}
LCC TWO TIMIN 438 ET
DM BR SOONER {CHB}
BR GABRIELLE 5082
THM DURANGO 4037 {SOD}
CRR D03 CASSIE 206
CH 372 POT OF GOLD 7120 ET
CH MISS DIAL 6311

CED	BW	WW	YW	MILK	CW	REA	MARB	\$CHB
+1.4	+4.5	+66	+104	+23	+73	+49	-.03	+102

- Gifted Style is a direct daughter of the immortal InStyle 1115 and is the only fall bred female in the offering. Sired by BR Nitro Aventus, the Supreme Champion Hereford and Grand Champion Horned Bull at the 2016 NWSS.
- This powerfully constructed two-year-old is loaded with bone, butt, style and a big time performance EPD profile to go along with her killer phenotype. A donor in the making, she will be ready to flush this fall after she calves in September.
- Full sister sells as Lot 42. Maternal sisters sell as Lots 3–9 and 34. Dam's flush sells as Lot 19.
- Due to calve in September to BCC The Kid 960G ET.



BCC THE KID 960G ET

Pasture service sire to Lot 21...his progeny sell

lot 21 is a direct daughter of InStyle 1115

Donor Flush



C STARBURST 4029 ET

Lot 22 flush donor

selling the right to flush

22

C Starburst 4029 ET

COW 1/4/14 • P43469635 • tattoo: LE 4029 • polled

SHF RIB EYE M326 R117 {CHB,SOD}
NJW 98S R117 RIBEYE 88X ET {SOD,CHB}
 NJW 9126J DEW DOMINO 98S {DOD}
 • {DLF,HYF,IEF}
 C-S PURE GOLD 98170 {SOD}
HHR PAY IN GOLD 1008X ET
 RR BONDED LADY P824

KCF BENNETT 3008 M326 {CHB,SOD}
 HVH MISS HUDSON 83K 8M
 CL 1 DOMINO 9126J 1ET {SOD}
 NJW 57G 74G DEW 5M
 C GOLD RUSH 1ET
 C MS DOM 93218 1ET
 REMITALL ONLINE 122L {CHB,SOD}
 MCA LADY LOUANN 027K

CED	BW	WW	YW	MILK	CW	REA	MARB	SCHB
+4.2	+3.0	+53	+83	+32	+61	+.55	+.24	+126

- C Starburst 4029 ET was Happ Herefords' selection of the fall-calving females in the Buck Cattle Co. "Sharing The Tradition" Female Sale this past May. She certainly needs no introduction to Hereford breeders, as she is a full sister to C Candy Cane 4030, Grand Champion Female at Reno and Fort Worth and Reserve Grand Champion Female in Denver.
- Starburst has been a prolific producer, with six daughters in production in the Buck Cattle Co. sale this past May commanding \$77,300 for a \$12,883 average. Lot 10 was the feature of those Starburst daughters, commanding \$48,000 to Drum Cattle Co. in Arkansas.
- In the Buck Cattle Co. heifer calf sales, Starburst's progeny have commanded \$40,000, \$30,000, \$25,000 and \$17,000, with several others fetching over \$10,000.
- Selling a successful conventional or IVF flush consisting of six transferable embryos and one pregnancy if put in by a certified embryologist. The buyer is responsible for all costs associated with the flush. Starburst is due to calve 10/18/21 and will be available to flush conventionally or IVF in late November.



lot 23

half interest donor

23

Crane *Full of Style* 1563 ET

COW

5/4/15 • 43624688 • tattoo: BE 1563 • horned

H WCC/WB 668 WYARNO 9500 ET [SOD]

H/TSR/CHEZ/FULL THROTTLE ET

R SWEET RED WINE 039

• {DLF,HYF,IEF,MSUDF}

CH 372 POT OF GOLD 7120 ET

CRANE STYLE POINTS 945

CH MISS DIAL 6311

TH JWR SOP 16G 57G TUNDRA 63N [SOD]

H KATHY 668 ET

MSU TCF REVOLUTION 4R [SOD]

R MISS WRANGLER 207

KP GOLD MINE 372

CH LADY PROPHET 0220

LF BH DIAL UP ET

CH LADY PROPHET 3226



CED	BW	WW	YW	MILK	CW	REA	MARB	SCHB
+5.9	+1.8	+48	+78	+16	+70	+48	+02	+104

- Selling 1/2 interest with possession negotiable.
- This powerfully designed direct daughter of the now-deceased Crane Style Points 945 certainly has a fitting name, as she is Full of Style. When you analyze the bone, body, power, udder quality and presence she possesses, you will be excited about the Hereford business. She is just coming into her prime, and Chris is offering the opportunity to get in on this valuable breeding piece.
- Maternal sister sells as Lot 33.
- Froze 10 IVF sexed female embryos in her last IVF flush.
- AI 7/14/21 to KLD RW Marksman D87 ET.



CRANE STYLE POINTS 945

Dam of Lot 23...many other descendants sell



Heifer Calf Pair



lot 24



HAPP KOOL AID POINTS 1218 ET
dam of Lot 24

lot 24A



24

BK Dottie Dawn 6036D ET

COW

8/6/16 • 43772180 • tattoo: LE 6036D • horned

SHF RIB EYE M326 R117 {CHB,SOD}
NJW 98S R117 RIBEYE 88X ET {SOD,CHB}
NJW 9126J DEW DOMINO 98S {DOD}

• {DLF,HYF,IEF,MSUDF}

DELHAWK KAHUNA 1009 ET
HAPP KOOL AID POINTS 1218 ET
CRANE STYLE POINTS 945

KCF BENNETT 3008 M326 {CHB,SOD}
HVH MISS HUDSON 83K 8M
CL 1 DOMINO 9126J 1ET {SOD}
NJW 57G 74G DEW 5M
CH ENUFF PROPHET 2913
MCR PPF MISS GOLD DOM 206 ET
CH 372 POT OF GOLD 7120 ET
CH MISS DIAL 6311



CED	BW	WW	YW	MILK	CW	REA	MARB	SCHB
+14.7	-1.2	+47	+70	+29	+54	+47	+33	+107

- Dottie Dawn is a unique breeding piece who combines the time-tested sire 88X with the prolific National Champion and producer of National Champions Kool Aid Points.
- If you like bone and power with maternal strength, Dottie Dawn is your type of female. Check out her calving-ease profile, as it allows endless mating options. The goods are stacked. Come and get your next producer of champions.
- Daughter sells as Lot 11.
- AI 7/14/21 to T/R BPF American Classic 561C ET.

24a

Happ Dotted Line 70J

COW

6/1/21 • 44271113 • tattoo: LE 70J • horned

TFR KR SUNDANCE KID 1448 ET
BCC THE KID 960G ET
BCC MISS MAYBARRY 064X

NJW 98S R117 RIBEYE 88X ET {SOD,CHB}
BK DOTTIE DAWN 6036D ET
HAPP KOOL AID POINTS 1218 ET

AH JDH CRACKER JACK 26U ET {SOD}
STAR NONE 2 SHABBEE 64Y ET
TFR HIGH COTTON 328 ET {SOD}
BCC L1 MEDORA 744
SHF RIB EYE M326 R117 {CHB,SOD}
NJW 9126J DEW DOMINO 98S {DOD}
DELHAWK KAHUNA 1009 ET
CRANE STYLE POINTS 945

CED	BW	WW	YW	MILK	CW	REA	MARB	SCHB
+9.2	+1.1	+50	+84	+27	+70	+60	+15	+123

- Dotted Line is a June horned heifer calf sired by BCC The Kid, a herd bull Chris selected out of the Baumgarten program in North Dakota. Being easy on the eyes with added bone and hip and loaded with pigment makes this June heifer pretty special. When she matures, we project she will look a lot like her dam, Dottie Dawn.
- Sells open.

Heifer Calf Pair



lot 25



JSF 12N LADY VAL 9T
dam of Lot 25

lot 25A



25

Happ *About Val* 1931 ET

COW 5/30/19 • P44264674 • tattoo: RE 1931 • polled

THM DURANGO 4037 {SOD}
CRR ABOUT TIME 743 {SOD}
CRR D03 CASSIE 206

GHC BEAR 12N
JSF 12N LADY VAL 9T
HSF 60G LADY VAL 48K

CS BOOMER 29F {SOD}
THM 7085 VICTRA 9036
SHF INTERSTATE 20X D03 {SOD}
CRR 475E CASSIE 838
GHC CHUNK 113L
BAR-E-L SYBIL 7D
JSF 23 NIBBS 60G
JSF 22 VALRIE 25B

CED	BW	WW	YW	MILK	CW	REA	MARB	SCHB
+1.9	+0.9	+49	+72	+20	+67	+40	-.02	+96

- Happ About Val is a direct daughter of the immortal 9T that has a picture-perfect udder and is built second to none. You have to love her style, balance and the mass she displays for a young two-year-old. If you could have a pasture full of females like About Val, you would be in the driver's seat. Wait until you see her heifer calf in person, and she will show you the genetic power instilled in About Val.

• Maternal sisters sell as Lots 10, 29, 32, 39 and 40.

• AI 7/14/21 to T/R BPF American Classic 561C ET.

25a

Happ 1931 *Journey* 71J

COW 6/5/21 • P44271117 • tattoo: LE 71J • polled

CRR 109 CATAPULT 322
CRR 322 BELL 617
BRL WHIRL 59A

CRR ABOUT TIME 743 {SOD}
HAPP ABOUT VAL 1931 ET
JSF 12N LADY VAL 9T

CRR 719 CATAPULT 109 {SOD}
CRR 713 KELLY 0117
BOYD WORLDWIDE 9050 ET {SOD}
BRL ENVY 059Y
THM DURANGO 4037 {SOD}
CRR D03 CASSIE 206
GHC BEAR 12N
HSF 60G LADY VAL 48K

CED	BW	WW	YW	MILK	CW	REA	MARB	SCHB
+3.1	+0.4	+47	+70	+20	+58	+38	+0.7	+95

- This June polled female is something special. We love the pattern and power she displays at such a young age. If you want a big time show heifer that also has big time earning potential, pay attention to this young heifer calf.

• Sells open.



Heifer Calf Pair



lot 26



JCS TATER TOT 3560
dam of Lot 26

lot 26A



26

MCKY *Jasmine* 9803 ET

COW

1/4/19 • 44069547 • tattoo: RE 9803 • horned

CRR 719 CATAPULT 109 [SOD]
CRR 109 CATAPULT 347
CRR 352 PRIMA DONNA 528

JCS COOL KAT 6928
JCS TATER TOT 3560
JCS MISS 510 EXCELLA 9201

TH 122 711 VICTOR 719T [SOD]
CRR 4037 ECLIPSE 808
CRR DO3 VISION 352
CRR 959 DONNA 137
CJH LT DOMINO 1106
JCS MISS ROYALTY 3676
F L18 EXCEL 510
JCS MISS ROYALTY 4767

CED	BW	WW	YW	MILK	CW	REA	MARB	SCHB
+1.0	+4.0	+52	+87	+23	+59	+31	-.02	+93

- Jasmine is a direct daughter of JCS Tater Tot, the 2015 NWSS Grand Champion Horned Female. The Fawcett's Elm Creek Ranch and McKay Cattle Co. programs have produced several high end individuals that have commanded top dollar and then gone on to claim National Champion honors. Tater Tot has been one of the most influential donors for both of those programs the past several years.
- 9803 is big legged, stout hipped, super correct in her lines and has champion lineage running through her veins. An elite young donor candidate.
- AI 6/1/21 to Happ BK Valor 37C ET. PE 6/10/21 to 9/10/21 to CRR 322 Bell 617. Ultrasound checked safe PE. Estimated due date 3/28/22.

26a

Happ *Jasmine* 57J

COW

4/15/21 • 44272049 • tattoo: LE 57J • horned

BR BELLE AIR 6011 [CHB]
MCKY 8790
BR ABIGAIL 6751 ET

CRR 109 CATAPULT 347
MCKY JASMINE 9803 ET
JCS TATER TOT 3560

BAR S LHF 028 240 [CHB]
BR BELLE 4082 ET
CRR ABOUT TIME 743 [SOD]
BR ABIGAIL 8130 ET
CRR 719 CATAPULT 109 [SOD]
CRR 352 PRIMA DONNA 528
JCS COOL KAT 6928
JCS MISS 510 EXCELLA 9201

CED	BW	WW	YW	MILK	CW	REA	MARB	SCHB
-1.7	+3.8	+57	+94	+28	+67	+43	+13	+117

- A unique bred horned heifer calf whose sire stems back to some of the most influential donor dams and sires at Barber Ranch, including 4082, 8130 and Belle Air. 57J is going to be one powerful donor upon the completion of her show career. Just look at the bone size, stoutness of hip and cool front end! An overall powerful genetic package with extreme phenotype.
- Sells open.

Heifer Calf Pair



lot 27



BR BELLE AIR 6011
sire of Lot 27

lot 27A



27

BR Madelynn 9016

COW 1/22/19 • 44012930 • tattoo: BE 9016 • horned

BAR S LHF 028 240 [CHB]
BR BELLE AIR 6011 [CHB]
BR BELLE 4082 ET
• [DLF, HYF, IEF, MSUDF]
BR NITRO AVENTUS 3116 ET
BR MADELYNN 6812 ET
BR MADELYNN 8017 ET

CHURCHILL SENSATION 028X [SOD]
CHURCHILL LADY 078X
GOLDEN OAK OUTCROSS 18U [SOD]
BR CSF BRIELLE 8052 ET
UPS TCC NITRO 1ET [SOD]
BR ABIGAIL 8130 ET
DM BR SOONER [CHB]
BR L1 DOMINETTE 6052

CED	BW	WW	YW	MILK	CW	REA	MARB	SCHB
-1.5	+3.3	+60	+97	+36	+62	+55	+34	+130

- Madelynn is straight from the heart of the Barber Ranch breeding program. Sired by the two-time Supreme Champion Belle Air and out of a female sired by Aventus, another Denver Supreme Champion in his own right. Her maternal granddam is 8017, one of the first females sold in the Barber Holiday Lights Sale in Fort Worth, TX.
- Big feet, big legs and a big hip with a long neck enhance this two-year-old female's ability to produced high-end progeny. Solid EPD profile with added performance, maternal strength and value-added carcass merit.
- AI 4/24/21 to K Rustic 711 ET. PE 5/20/21 to 9/10/21 to CRR 322 Bell 617. Ultrasound checked safe PE. Estimated due date 3/12/22.

27a

Happ Jet Set 48J

COW 3/15/21 • 44271100 • tattoo: LE 48J • horned

CHURCHILL SENSATION 028X [SOD]
CMCC DA COWBOY POINTS 695C
HAPP GAME POINT 14B

BR BELLE AIR 6011 [CHB]
BR MADELYNN 9016
BR MADELYNN 6812 ET

UPS DOMINO 3027 [CHB, SOD]
CHURCHILL LADY 7202T ET
NJW 98S R117 RIBEYE 88X ET [SOD, CHB]
CRANE STYLE POINTS 945
BAR S LHF 028 240 [CHB]
BR BELLE 4082 ET
BR NITRO AVENTUS 3116 ET
BR MADELYNN 8017 ET

CED	BW	WW	YW	MILK	CW	REA	MARB	SCHB
+2.4	+2.4	+56	+89	+33	+59	+50	+27	+119

- Jet Set is dark red, short marked, powerful and loaded with bone. Super cool fronted and smooth made will make this female a surefire donor after her show career. Backed by powerful, proven genetics!
- Sells open.



Heifer Calf Pair



lot 28



lot 28A

28

MWT 480 *Avalon* 6G ET

COW

5/15/19 • P44068697 • tattoo: LE 6G • polled

RST TIMES A WASTIN 0124 {SOD}
LCC FB TIME TRAVELER 480
JB REMETEE 213

DELHAWK KAHUNA 1009 ET
DELHAWK GEORGETTE 17A ET
GVM MISS BO 84E 94J

CRR ABOUT TIME 743 {SOD}
RST MS 1000 BLAZER 2029 {DOD}
PURPLE MILSAP 45S {SOD}
WPH BAILEY 3P
CH ENUFF PROPHET 2913
MCR PPF MISS GOLD DOM 206 ET
GVM BM EXPLOSION 46B 84E
GVM MISS RNWL 4S 61F

CED	BW	WW	YW	MILK	CW	REA	MARB	SCHB
-0.3	+3.5	+52	+89	+27	+73	+60	-.06	+115

- A two-year-old that combines power and style! Dark red, heavy pigmented, huge boned and stout hipped with super structure. Avalon's neck ties high, creating that elegant, feminine look through her front 1/3. An elite young female that is going to be a high end producer, as evident in her Blueprint heifer calf at side.
- Offered by Barron Road Herefords.
- AI 6/4/21 to K Rustic 711 ET. PE 6/10/21 to 9/10/21 to CRR 322 Bell 617. Ultrasound checked safe PE. Estimated due date 3/28/22.

28a

MWT 6153 *Oakley* 6J

COW

4/14/21 • P44260018 • tattoo: LE 6J • polled

R LEADER 6964
BOYD 31Z BLUEPRINT 6153
NJW 91H 100W RITA 31Z ET

LCC FB TIME TRAVELER 480
MWT 480 AVALON 6G ET
DELHAWK GEORGETTE 17A ET

HYALITE ON TARGET 936 {SOD}
R MISS REVOLUTION 1009 {DOD}
NJW 73S M326 TRUST 100W ET {SOD,CHB}
REMITALL RITA 91H
RST TIMES A WASTIN 0124 {SOD}
JB REMETEE 213
DELHAWK KAHUNA 1009 ET
GVM MISS BO 84E 94J

CED	BW	WW	YW	MILK	CW	REA	MARB	SCHB
+6.5	+2.3	+56	+91	+26	+68	+47	-.03	+111

- Sired by the ever-popular Boyd Blueprint, Oakley displays the dark red, goggle eyed and super feminine package we have come to expect from his progeny. This is a unique female in the making, and while she will be fun to campaign, mating this female in the future and getting her into production will be equally as exciting. She has an impressive EPD profile for CED, WW, YW, SC, Milk, Udder and Teat.
- Offered by Barron Road Herefords.
- Sells open.

Heifer Calf Pair



lot 29



JSF 12N LADY VAL 9T
dam of Lot 29



CMCC DA COWBOY POINTS 695C
sire of Lot 29A

29

Happ 9T *Lady Roll* 17E ET

cow

3/18/17 • 43963459 • tattoo: LE 17E • horned

STAR TCF LOCK-N-LOAD 300W ET
TFR KU ROLL THE DICE 1326
LH LANGFORD LADY 0253 ET

GHC BEAR 12N
JSF 12N LADY VAL 9T
HSF 60G LADY VAL 48K

LAGRAND RELOAD 80P ET {SOD,CHB}
STAR TCF ADV ORALEE 173P ET
THM DURANGO 4037 {SOD}
LPG 59K INDEPENDENCE LASS 22N
GHC CHUNK 113L
BAR-E-L SYBIL 7D
JSF 23 NIBBS 60G
JSF 22 VALRIE 25B

CED	BW	VW	YW	MILK	CW	REA	MARB	\$CHB
-1.2	+2.4	+59	+93	+23	+86	+60	+10	+130

- This powerfully designed four-year-old Roll The Dice daughter displays tremendous rib, length and power. Lady Roll has a gorgeous udder and is a direct daughter of the immortal and now-deceased 9T. Certainly a unique breeding piece that offers genetic diversity to many of the mainstream AI sires used today. Don't miss out on the chance to own a direct daughter of the great 9T.
- Maternal sisters sell as Lots 10, 25, 32, 39 and 40. Daughter sells as Lot 35.
- AI 5/21/21 to KLD RW Marksman D87 ET. Ultrasound checked safe AI. Estimated due date 2/27/22.
- PE 6/5/21 to 9/10/21 to CRR 322 Bell 617.

29a

Happ *Lady Jane* 55J

cow

4/2/21 • 44271106 • tattoo: LE 55J • horned

CHURCHILL SENSATION 028X {SOD}
CMCC DA COWBOY POINTS 695C
HAPP GAME POINT 14B

TFR KU ROLL THE DICE 1326
HAPP 9T LADY ROLL 17E ET
JSF 12N LADY VAL 9T

UPS DOMINO 3027 {CHB,SOD}
CHURCHILL LADY 7202T ET
NJW 98S R117 RIBEYE 88X ET {SOD,CHB}
CRANE STYLE POINTS 945
STAR TCF LOCK-N-LOAD 300W ET
LH LANGFORD LADY 0253 ET
GHC BEAR 12N
HSF 60G LADY VAL 48K

CED	BW	VW	YW	MILK	CW	REA	MARB	\$CHB
+2.5	+1.9	+55	+87	+26	+71	+52	+15	+119

- This horned direct descendant of the immortal 9T offers calving ease and maternal strength. Lady Jane balances up well and is feminine through her head and neck.
- Sells open.



Heifer Calf Pair



lot 30



lot 30A

30

DeLHawk JTH WRB *Betty* 313 ET

COW

1/8/13 • P43372773 • tattoo: LE 313 • polled

CH ENUFF PROPHET 2913
DELHAWK KAHUNA 1009 ET
MCR PPF MISS GOLD DOM 206 ET

• {DLF,HYF,IEF,MSUDF}
PURPLE TONIC 10M
HAWK WRB KO ISABELLE 10M 0608
KO HAWK ANNABILLE 110L 2P

M&M TUFF ENUFF 618
CH LADY PROPHET 0220
C -S PURE GOLD 98170 {SOD}
CJH 386 MISS 035
NJW 1Y WRANGLER 19D {SOD}
JH MISS MADALYNNE
PERKS LOGO 110L
WRB MARVEL BELLE 889M

CED	BW	WW	YW	MILK	CW	REA	MARB	SCHB
-4.5	+3.0	+48	+70	+26	70	+63	-.02	+106

- A powerful Kahuna daughter that originated in the DeLHawk program. Tremendous bone, substance and power in this stout featured individual. Super correct from end to end with balance and style.
- A daughter sells as Lot 38.
- AI 4/25/21 to KJ BJ 58Z Contender D56 ET. Ultrasound checked safe AI. Estimated due date 2/2/22.
PE 5/15/21 to 9/10/21 to CRR 322 Bell 617.

30a

Happ 313 *Joanna* 41J

COW

2/28/21 • 44271099 • tattoo: LE 41J • horned

UPS SENSATION 2296 ET
KJ BJ 58Z CONTENDER D56 ET {CHB}
MSU RACHAEL 58Z ET

DELHAWK KAHUNA 1009 ET
DELHAWK JTH WRB BETTY 313 ET
HAWK WRB KO ISABELLE 10M 0608

CHURCHILL SENSATION 028X {SOD}
UPS JT MISS NEON 7811 1ET
FELTONS LEGEND 242 {SOD}
MSU TCF RACHAEL ET 54N
CH ENUFF PROPHET 2913
MCR PPF MISS GOLD DOM 206 ET
PURPLE TONIC 10M
KO HAWK ANNABILLE 110L 2P

CED	BW	WW	YW	MILK	CW	REA	MARB	SCHB
+1.2	+2.6	+55	+79	+28	+75	+66	+06	+116

- Joanna has surfaced as one of the elite heifers in the offering since picture time. This horned female sired by Contender, the Reserve National Champion Horned bull at the 2018 NWSS, is stout, big boned, balanced and super cool on the profile. Joanna has tremendous upside, as she continues to get better and better each and every day.
- Sells open.

Heifer Calf Pair



lot 30

Power Donor!



lot 31A

31

DeLhawk *Georgette* 17A ET

COW

1/18/13 • P43392819 • tattoo: LE 17A • polled

CH ENUFF PROPHET 2913
DELHAWK KAHUNA 1009 ET
 MCR PPF MISS GOLD DOM 206 ET
 • {DLF,HYF,IEF,MSUDF}
 GVM BM EXPLOSION 46B 84E
GVM MISS BO 84E 94J
 GVM MISS RNWL 4S 61F

M&M TUFF ENUFF 618
 CH LADY PROPHET 0220
 C-S PURE GOLD 98170 {SOD}
 CJH 386 MISS 035
 REMITALL BOOMER 46B {SOD,CHB}
 GVM RST ERICA 43A 84C
 4S RENEWAL {SOD}
 VERLOU CENTURY 413T 951X

CED	BW	WW	YW	MILK	CW	REA	MARB	SCHB
-0.5	+3.0	+48	+80	+30	+67	+60	-.13	+103

- A big time feature donor that is an egg producing machine. Huge boned, stout hipped, loaded with volume and super attractive through her front 1/3. If you are in search of a power donor, take a serious look at this beast. Super correct from end to end, and her structure is impeccable. Youthful in her appearance and super productive with a lot more earning potential left in this individual.
- Produced 165 frozen embryos in five IVF flushes. 136 Grade 1, 29 Grade 2.
- Offered by Barron Road Herefords.
- AI 6/4/21 to K Rustic 711 ET. Ultrasound checked safe AI. Estimated due date 3/13/22. PE 6/10/21 to 9/10/21 to CRR 322 Bell 617.

31a

MWT 695 *Tswizzle* 17J

COW

5/3/21 • P44261749 • tattoo: LE 17J • polled

CHURCHILL SENSATION 028X {SOD}
CMCC DA COWBOY POINTS 695C
 HAPP GAME POINT 14B

DELHAWK KAHUNA 1009 ET
DELHAWK GEORGETTE 17A ET
 GVM MISS BO 84E 94J

UPS DOMINO 3027 {CHB,SOD}
 CHURCHILL LADY 7202T ET
 NJW 98S R117 RIBEYE 88X ET {SOD,CHB}
 CRANE STYLE POINTS 945
 CH ENUFF PROPHET 2913
 MCR PPF MISS GOLD DOM 206 ET
 GVM BM EXPLOSION 46B 84E
 GVM MISS RNWL 4S 61F

CED	BW	WW	YW	MILK	CW	REA	MARB	SCHB
+4.8	+1.3	+48	+77	+30	+61	+52	+0.05	+104

- A super stylish Cowboy Points daughter that is a replica of her dam but shorter marked. This young female is just a May, so give her time, as she will only explode from picture time to sale time. She has the lines, the power and the look to be pretty special.
- Offered by Barron Road Herefords.
- Sells open.

Bull Calf Pair



lot 32



lot 32A

32

Happ 9T *Lady Victoria* 1812 ET

cow

2/24/18 • P44052012 • tattoo: LE 1812 • polled

BAR S LHF 028 240 {CHB}
BR BELLE AIR 6011 {CHB}
BR BELLE 4082 ET

GHC BEAR 12N
JSF 12N LADY VAL 9T
HSF 60G LADY VAL 48K

CHURCHILL SENSATION 028X {SOD}
CHURCHILL LADY 078X
GOLDEN OAK OUTCROSS 18U {SOD}
BR CSF BRIELLE 8052 ET
GHC CHUNK 113L
BAR-E-L SYBIL 7D
JSF 23 NIBBS 60G
JSF 22 VALRIE 25B

CED	BW	WW	YW	MILK	CW	REA	MARB	\$CHB
+0.4	+0.9	+53	+84	+29	+69	+40	+33	+134

- Here is a unique bred three-year-old Belle Air daughter out of the maternal machine 9T. This mating worked, as Victoria is dark red, short marked, super correct and equipped with a gorgeous udder. A prolific EPD profile accompanies this future donor. This mating will not be replicated, as 9T has passed. Grab on to this elite genetic package. Maternal sisters sell as Lots 10, 25, 29, 39 and 40.
- AI 5/20/21 to T/R BPF American Classic 561C ET. Ultrasound checked safe AI. Estimated due date 2/26/22.
PE 6/10/21 to 9/10/21 to CRR 322 Bell 617.

32a

Happ 1812 *Jackson* 49J

bull

3/18/21 • P44272047 • tattoo: LE 49J • polled

CHURCHILL SENSATION 028X {SOD}
CMCC DA COWBOY POINTS 695C
HAPP GAME POINT 14B

BR BELLE AIR 6011 {CHB}
HAPP 9T LADY VICTORIA 1812 ET
JSF 12N LADY VAL 9T

UPS DOMINO 3027 {CHB,SOD}
CHURCHILL LADY 7202T ET
NJW 98S R117 RIBEYE 88X ET {SOD,CHB}
CRANE STYLE POINTS 945
BAR S LHF 028 240 {CHB}
BR BELLE 4082 ET
GHC BEAR 12N
HSF 60G LADY VAL 48K

CED	BW	WW	YW	MILK	CW	REA	MARB	\$CHB
+3.3	+1.2	+53	+83	+29	+62	+42	+26	+121

- A unique calving-ease herd sire prospect sired by the now-deceased Cowboy Points. Jackson has what everyone is always looking for—red legs, red neck, a solid EPD profile and stems from a maternal bred cow family that is known for producing beautiful udders. Don't miss the chance to own a herd bull that derives from the immortal Lady Val 9T.

Spring Bred Heifer



lot 33

33

Happ *Heavenly Points* 215 ET

cow

2/20/20 • 44165835 • tattoo: LE 215 • horned

HH ADVANCE 4075B ET [CHB]
H FHF ADVANCE 628 ET [CHB]
FHF 408 RITA 21W

HH ADVANCE 1013Y ET
HH MISS ADVANCE 0121X
CJH HARLAND 408 [SOD]
FHF 45P RITA 101T

CH 372 POT OF GOLD 7120 ET
CRANE STYLE POINTS 945
CH MISS DIAL 6311

KP GOLD MINE 372
CH LADY PROPHET 0220
LF BH DIAL UP ET
CH LADY PROPHET 3226

CED	BW	WW	YW	MILK	CW	REA	MARB	\$CHB
+1.6	+3.4	+57	+94	+14	+77	+61	-.03	+115

- Leading off the bred heifer division is a direct daughter of Crane Style Points 945, the donor matron that started it all for Happ Herefords. Sired by 628, one of the featured bulls purchased by Fawcetts in the 2017 Hoffman Ranch Bull Sale.
- The 945 daughters are flat out producers and have proven it time after time, no matter what they are sired by. The unique thing about this lineage is the diversity you have as a breeder, as they seem to click with everything.
- Heavenly Points is big legged, stout hiped and ultra-cool to look at. If you have always wanted a piece of this genetic lineage in your program, grab ahold. There will not be many more opportunities.
- Maternal sister sells as Lot 23.
- AI 4/23/21 to Boyd 31Z Blueprint 6153 (sexed female semen).
Ultrasound checked safe AI. Estimated calving date 1/30/22.
PE 5/5/21 to 9/10/21 to Happ 945 High Points 245 ET.



CRANE STYLE POINTS 945
dam of Lot 33



lot 35



HAPP 9T LADY ROLL 17E ET
dam of Lot 35...sells as Lot 29

lot 34

34

Happ 1115 *Styles* 218 ET

COW

3/5/20 • P44165232 • tattoo: LE 218 • polled

HAPP EXTRA POINT 1220 ET
HAPP BK VALOR 37C ET
JSF 12N LADY VAL 9T

CRR ABOUT TIME 743 [SOD]
HAPP MJH 945 INSTYLE 1115
CRANE STYLE POINTS 945

DELHAWK KAHUNA 1009 ET
CRANE STYLE POINTS 945
GHC BEAR 12N
HSF 60G LADY VAL 48K
THM DURANGO 4037 [SOD]
CRR D03 CASSIE 206
CH 372 POT OF GOLD 7120 ET
CH MISS DIAL 6311

CED	BW	WW	YW	MILK	CW	REA	MARB	SCHB
+2.2	+2.8	+63	+98	+21	+81	+60	.00	+112

- A direct daughter of Happ's popular donor InStyle 1115. This long made, super cool fronted, dark cherry red Valor daughter has style to burn. Her balanced EPD profile offers you many options at breeding time. If you like them cool and sleek, you will love Styles.
- Full sister sells as Lot 3. Maternal sisters sell as Lots 4–9, 21 and 42. Dam's flush sells as Lot 19.
- AI 4/23/21 to Boyd 31Z Blueprint 6153 (sexed female semen). Ultrasound checked safe AI. Estimated calving date 1/30/22.
PE 5/5/21 to 9/10/21 to Happ 945 High Points 245 ET.

35

Happ 617 *Hope* 211

COW

2/15/20 • P44272143 • tattoo: LE 211 • polled

CRR 109 CATAPULT 322
CRR 322 BELL 617
BRL WHIRL 59A

TFR KU ROLL THE DICE 1326
HAPP 9T LADY ROLL 17E ET
JSF 12N LADY VAL 9T

CRR 719 CATAPULT 109 [SOD]
CRR 713 KELLY 0117
BOYD WORLDWIDE 9050 ET [SOD]
BRL ENVY 059Y
STAR TCF LOCK-N-LOAD 300W ET
LH LANGFORD LADY 0253 ET
GHC BEAR 12N
HSF 60G LADY VAL 48K

CED	BW	WW	YW	MILK	CW	REA	MARB	SCHB
+1.3	+1.1	+52	+81	+22	+67	+48	+13	+113

- Hope is sired by the resident herd sire "Bell." If you want to talk about a striking, big boned female with tremendous look and style yet ultra-feminine in her presence, take a look here! I will let the picture do the talking for this beast.
- Dam sells as Lot 29.
- AI 6/1/21 to Purple Reuben James 40A ET.
PE 6/10/21 to 9/10/21 to Happ 945 High Points 245 ET. Ultrasound checked safe PE. Estimated calving date 3/28/22.

Spring Bred Heifers



lot 36



lot 37

36

Spin *Lulu Lemon* 1902

COW 11/22/19 • P44135835 • tattoo: LE 1902 • polled

CRR 109 CATAPULT 322
CRR 322 BELL 617
BRL WHIRL 59A

CRR ABOUT TIME 743 [SOD]
SPIN CHATTANOOGA LUCY 2E ET
PURPLE BRISTOL 42Y ET

CRR 719 CATAPULT 109 [SOD]
CRR 713 KELLY 0117
BOYD WORLDWIDE 9050 ET [SOD]
BRL ENVY 059Y
THM DURANGO 4037 [SOD]
CRR D03 CASSIE 206
TH JWR SOP 16G 57G TUNDRA 63N [SOD]
MCR PPF MISS GOLD DOM 206 ET

CED	BW	WW	YW	MILK	CW	REA	MARB	SCHB
+5.7	0.0	+47	+72	+22	+57	+42	+07	+101

- Lulu Lemon stems back to the immortal "206," a very influential donor not only for Hawk Livestock and Purple Reign Cattle Co. but within the Hereford breed. Sired by Bell, an elite breeding bull, as evidenced by his progeny displayed in this sale. Dark red, big bodied, powerful and loaded with pigment...what more could you ask for?
- Offered by Spinazola Cattle.
- AI 5/23/21 to Purple Chachi 65Z ET.
PE 6/10/21 to 9/10/21 to Happ 945 High Points 245 ET. Ultrasound checked safe PE. Estimated calving date 3/28/22.

37

Spin *Bella* 1901

COW 11/8/19 • 44135836 • tattoo: LE 1901 • horned

CRR 109 CATAPULT 322
CRR 322 BELL 617
BRL WHIRL 59A

TFR KU ROLL THE DICE 1326
SPIN AXL ROSE 1701 ET
DELHAWK SAPPHIRE 109A ET

CRR 719 CATAPULT 109 [SOD]
CRR 713 KELLY 0117
BOYD WORLDWIDE 9050 ET [SOD]
BRL ENVY 059Y
STAR TCF LOCK-N-LOAD 300W ET
LH LANGFORD LADY 0253 ET
CRR ABOUT TIME 743 [SOD]
MCR PPF MISS GOLD DOM 206 ET

CED	BW	WW	YW	MILK	CW	REA	MARB	SCHB
-3.0	+3.6	+58	+92	+24	+68	+55	+06	+112

- You will find "206" once again on the maternal side of Bella's pedigree. Bella is a stout featured, big boned, big topped, big hipped kind of power female. You have to see her in person to appreciate the mass and power she displays. Need a stout future donor? Here she is!
- Offered by Spinazola Cattle.
- AI 5/13/21 to Purple Reuben James 40A ET.
PE 5/28/21 to 9/10/21 to Happ 945 High Points 245 ET. Ultrasound checked safe PE. Estimated calving date 3/28/22.



Spring Bred Heifers



lot 38



lot 39

38

Happ *About Hadley* 206 ET

COW

1/20/20 • P44272144 • tattoo: LE 206 • polled

THM DURANGO 4037 {SOD}
CRR ABOUT TIME 743 {SOD}
CRR D03 CASSIE 206

DELHAWK KAHUNA 1009 ET
DELHAWK JTH WRB BETTY 313 ET
HAWK WRB KO ISABELLE 10M 0608

CS BOOMER 29F {SOD}
THM 7085 VICTRA 9036
SHF INTERSTATE 20X D03 {SOD}
CRR 475E CASSIE 838
CH ENUFF PROPHET 2913
MCR PPF MISS GOLD DOM 206 ET
PURPLE TONIC 10M
KO HAWK ANNABBLE 110L 2P

CED	BW	WW	YW	MILK	CW	REA	MARB	SCHB
-1.0	+2.7	+50	+74	+25	+69	+55	-.08	+97

- Hadley is a huge boned, stout featured individual. Sired by the sire of champions About Time and out of a powerful Kahuna daughter, Hadley will supply the power!
- Dam sells as Lot 30.
- AI 5/20/21 to Purple Reuben James 40A ET. Ultrasound checked safe AI. Estimated calving date 2/26/22.
PE 6/5/21 to 9/10/21 to Happ 945 High Points 245 ET.

39

Happ 9T *Hazel* 202 ET

COW

1/3/20 • 44165169 • tattoo: LE 202 • horned

NJW 73S W18 HOMETOWN 10Y ET {SOD,CHB}
AMC 0103 10Y TOWN HALL 1D {CHB}
H W4 MARIAH 0103 ET

• {DLF,HYF,IEF,MSUDF,MDC}
GHC BEAR 12N
JSF 12N LADY VAL 9T
HSF 60G LADY VAL 48K

SHF WONDER M326 W18 ET {CHB,SOD}
NJW P606 72N DAYDREAM 73S
GOLDEN OAK OUTCROSS 18U {SOD}
HH MISS ADVANCE 316N 1ET

GHC CHUNK 113L
BAR-E-L SYBIL 7D
JSF 23 NIBBS 60G
JSF 22 VALRIE 25B

CED	BW	WW	YW	MILK	CW	REA	MARB	SCHB
+3.1	+2.0	+46	+78	+23	+72	+55	-.01	+109

- Lots 39 and 40 are flush mate sisters that are direct daughters of the immortal 9T. They are stout featured, dark red in color and loaded with pigment. Females of this stature only gain in value once they hit production. Take advantage of these genetics Chris is offering to you Sunday, September 12.
- Full sisters sell as Lots 10 and 40. Maternal sisters sell as Lots 25, 29 and 32.
- AI 4/24/21 to Boyd 31Z Blueprint 6153 (sexed female semen). Ultrasound checked safe AI. Estimated calving date 1/31/22.
PE 5/5/21 to 9/10/21 to Happ 945 High Points 245 ET.

Spring Bred Heifers



lot 40

full sisters sell as
lots 39 and 40



lot 41

40

Happ 9T *Lady Hera* 209 ET

COW

2/4/20 • 44271169 • tattoo: LE 209 • horned

NJW 73S W18 HOMETOWN 10Y ET {SOD,CHB} SHF WONDER M326 W18 ET {CHB,SOD}
AMC 0103 10Y TOWN HALL 1D {CHB} NJW P606 72N DAYDREAM 73S
H W4 MARIAH 0103 ET GOLDEN OAK OUTCROSS 18U {SOD}
• {MDP} HH MISS ADVANCE 316N 1ET
GHC BEAR 12N
JSF 12N LADY VAL 9T
HSF 60G LADY VAL 48K
GHC CHUNK 113L
BAR-E-L SYBIL 7D
JSF 23 NIBBS 60G
JSF 22 VALRIE 25B

CED	BW	WW	YW	MILK	CW	REA	MARB	SCHB
+2.7	+2.3	+54	+88	+25	+81	+63	+02	+124

- We really like the look and presence that Lady Hera offers. So stout and just has that WOW factor. Tell me mating this female would not get you excited. Come to the home where champions are produced!
- Full sisters sell as Lots 10 and 39. Maternal sisters sell as Lots 25, 29 and 32.
- AI 4/24/21 to UPS Sensation 2296 ET. Ultrasound checked safe AI. Estimated calving date 1/31/22.
PE 5/5/21 to 9/10/21 to Happ 945 High Points 245 ET.

41

Spin *Rebel* 2H

COW

2/25/20 • 44200716 • tattoo: LE 2H • horned

CHURCHILL SENSATION 028X {SOD} UPS DOMINO 3027 {CHB,SOD}
CMCC DA COWBOY POINTS 695C CHURCHILL LADY 7202T ET
HAPP GAME POINT 14B NJW 98S R117 RIBEYE 88X ET {SOD,CHB}
CRANE STYLE POINTS 945
THM DURANGO 4037 {SOD}
CRR ABOUT TIME 743 {SOD} CRR D03 CASSIE 206
SPIN TAMERA 10F ET ANKONIAN MIDAS 72
DSUL MISS SUMMIT 445P ET B&S MISS SUMMIT 145E

CED	BW	WW	YW	MILK	CW	REA	MARB	SCHB
+3.4	+1.9	+48	+77	26	+58	+44	+08	+104

- This set of bred heifers is impressive! They are dark in color, short marked, stout legged, stout hipped and loaded with style. This group of females represents the future, and it will be interesting to see which ones make their claim to the top.
- This Cowboy Points daughter is impressive from every angle and is something to visually appraise in person.
- Offered by Spinazola Cattle.
- AI 4/23/21 to Purple Reuben James 40A ET. Ultrasound checked safe AI. Estimated calving date 1/30/22.
PE 6/5/21 to 9/10/21 to Happ 945 High Points 245 ET.



Spring Bred Heifers



lot 42



HAPP MJH 945 INSTYLE 1115

dam of Lot 42



lot 43

42

Happ *House of Style* 241 ET

COW

4/15/20 • 44271132 • tattoo: LE 241 • horned

UPS TCC NITRO 1ET {SOD}
BR NITRO AVENTUS 3116 ET
BR ABIGAIL 8130 ET

CRR ABOUT TIME 743 {SOD}
HAPP MJH 945 INSTYLE 1115
CRANE STYLE POINTS 945

GH NEON 17N {CHB,SOD}
LCC TWO TIMIN 438 ET
DM BR SOONER {CHB}
BR GABRIELLE 5082
THM DURANGO 4037 {SOD}
CRR D03 CASSIE 206
CH 372 POT OF GOLD 7120 ET
CH MISS DIAL 6311

CED	BW	WW	YW	MILK	CW	REA	MARB	\$CHB
+1.3	+4.6	+66	+104	+23	+73	+49	-.04	+102

- Lots 42–45 are the younger spring bred heifers, and what a way to start with this Aventus x InStyle 1115. A little greener, 241 comes to you with all the right parts and pieces. Very elegant through her front 1/3, wide pinned, big boned and sound in structure. Do not overlook this female sale day, as her producing potential is extremely high.
- Full sister sells as Lot 21. Maternal sisters sell as Lots 3–9, 21 and 42. Dam's flush sells as Lot 19.
- AI 6/1/21 to CMCC DA Cowboy Points 695C.
PE 6/20/21 to 9/10/21 to Happ 945 High Points 245 ET. Ultrasound checked safe PE. Estimated calving date 3/28/21.

43

Happ Spin *Harriet* 251 ET

COW

4/20/20 • P44271141 • tattoo: LE 251 • polled

NJW 98S R117 RIBEYE 88X ET {SOD,CHB}
PURPLE PLAYMAKER 15B ET
PURPLE COTTON 40T ET

CRR ABOUT TIME 743 {SOD}
HAPP EVANGELINE 5A
CRANE STYLE POINTS 945

SHF RIB EYE M326 R117 {CHB,SOD}
NJW 9126J DEW DOMINO 98S {DOD}
LAGRAND RELOAD 80P ET {SOD,CHB}
CRR D03 COTTON 356
THM DURANGO 4037 {SOD}
CRR D03 CASSIE 206
CH 372 POT OF GOLD 7120 ET
CH MISS DIAL 6311

CED	BW	WW	YW	MILK	CW	REA	MARB	\$CHB
-.01	+4.3	+60	+92	+28	+73	+57	+05	+112

- Freaky and cool best describes Harriet. She has a cool silhouette and is striking to visually appraise. Get this one mated right and watch out, as the potential to raise a high one is in her.
- Maternal sister sells as Lot 44.
- PE 5/15/21 to 9/10/21 to Happ 945 High Points 245 ET. Ultrasound checked safe PE. Estimated calving date 3/1/22.

Spring Bred Heifers



lot 44

maternal sisters sell as
lots 43 and 44



lot 45

44

Happ Spin *Hermione* 253 ET

COW 4/23/20 • 44271143 • tattoo: LE 253 • horned

STAR TCF LOCK-N-LOAD 300W ET
TFR KU ROLL THE DICE 1326
LH LANGFORD LADY 0253 ET

CRR ABOUT TIME 743 [SOD]
HAPP EVANGELINE 5A
CRANE STYLE POINTS 945

LAGRAND RELOAD 80P ET [SOD,CHB]
STAR TCF ADV ORALEE 173P ET
THM DURANGO 4037 [SOD]
LPG 59K INDEPENDENCE LASS 22N
THM DURANGO 4037 [SOD]
CRR D03 CASSIE 206
CH 372 POT OF GOLD 7120 ET
CH MISS DIAL 6311

CED	BW	WW	YW	MILK	CW	REA	MARB	SCHB
-0.4	+3.8	+62	+102	+27	+87	+65	+0.3	+126

- A powerfully constructed individual with added butt, bone and body. Horned and stout, this Roll the Dice daughter is genetically potent. Granddaughter of the immortal Style Points 945.
- Maternal sister sells as Lot 43.
- PE 5/15/21 to 9/10/21 to Happ 945 High Points 245 ET. Ultrasound checked safe PE. Estimated calving date 3/28/22.

45

Happ *Helga* 240

COW 4/15/20 • 44271129 • tattoo: LE 240 • horned

CHURCHILL SENSATION 028X [SOD]
CMCC DA COWBOY POINTS 695C
HAPP GAME POINT 14B

CRR ABOUT TIME 743 [SOD]
BK BARBIE 420B ET
REMITALL KIM ET 136R

UPS DOMINO 3027 [CHB,SOD]
CHURCHILL LADY 7202T ET
NJW 98S R117 RIBEYE 88X ET [SOD,CHB]
CRANE STYLE POINTS 945
THM DURANGO 4037 [SOD]
CRR D03 CASSIE 206
REMITALL GOVERNOR 236G [SOD,CHB]
REMITALL KIM 10L

CED	BW	WW	YW	MILK	CW	REA	MARB	SCHB
+4.2	+2.1	+50	+79	+26	+62	+46	+1.0	+109

- Helga is a stout legged, big hipped, ultra-cool designed female with production power. Super correct in her lines and sound in structure. What an elite set of females Happ Herefords has assembled for your appraisal!
- AI 7/1/21 to CMCC DA Cowboy Points 695C.
PE 7/10/21 to 9/10/21 to Happ 945 High Points 245 ET.



AI & Pasture Service Sires Represented

— for reference only —



BCC THE KID 960G ET



HAPP 945 HIGH POINTS 245 ET



HAPP BK VALOR 37C ET



CMCC DA COWBOY POINTS 695C

A

BCC *The Kid* 960G ET

bull

2/21/19 • 44057689 • tattoo: BE 960 • horned

AH JDH CRACKER JACK 26U ET {SOD}

TFR KR SUNDANCE KID 1448 ET

STAR NONE 2 SHABBE 64Y ET

• {DLF,HYF,IEF,MSUDF}

TFR HIGH COTTON 328 ET {SOD}

BCC MISS MAYBARRY 064X

BCC L1 MEDORA 744

NJW 1Y WRANGLER 19D {SOD}

CRR D03 VIOLET 349

GOLDEN OAK OUTCROSS 18U {SOD}

STAR TCF ADV ORALEE 173P ET

LAGRAND RELOAD 80P ET {SOD,CHB}

CRR D03 COTTON 356

CL 1 DOMINO 4162P 1ET {SOD}

BCC L1 PRINCESS 560

CED	BW	WW	YW	MILK	CW	REA	MARB	\$CHB
+2.7	+3.3	+53	+99	+26	+86	+73	-.04	+138

• Happ herd sire.

D

Happ BK *Valor* 37C ET

bull

3/26/15 • 43624768 • tattoo: LE 37C • horned

DELHAWK KAHUNA 1009 ET

HAPP EXTRA POINT 1220 ET

CRANE STYLE POINTS 945

• {DLF,HYF,IEF}

GHC BEAR 12N

JSF 12N LADY VAL 9T

HSF 60G LADY VAL 48K

CH ENUFF PROPHET 2913

MCR PPF MISS GOLD DOM 206 ET

CH 372 POT OF GOLD 7120 ET

CH MISS DIAL 6311

GHC CHUNK 113L

BAR-E-L SYBIL 7D

JSF 23 NIBBS 60G

JSF 22 VALRIE 25B

CED	BW	WW	YW	MILK	CW	REA	MARB	\$CHB
+1.0	+2.0	+64	+97	+21	+91	+71	+0.8	+122

• Happ herd sire. Owned with Buck Cattle Co. and Moore Cattle Co.

B

Happ 945 *High Points* 245 ET

bull

4/15/20 • 44273152 • tattoo: LE 245 • horned

SHF RIB EYE M326 R117 {CHB,SOD}

NJW 98S R117 RIBEYE 88X ET {SOD,CHB}

NJW 9126J DEW DOMINO 98S {DOD}

CH 372 POT OF GOLD 7120 ET

CRANE STYLE POINTS 945

CH MISS DIAL 6311

KCF BENNETT 3008 M326 {CHB,SOD}

HVH MISS HUDSON 83K 8M

CL 1 DOMINO 9126J 1ET {SOD}

NJW 576 74G DEW 5M

KP GOLD MINE 372

CH LADY PROPHET 0220

LF BH DIAL UP ET

CH LADY PROPHET 3226

CED	BW	WW	YW	MILK	CW	REA	MARB	\$CHB
+5.5	+2.1	+51	+80	+26	+62	+39	+1.9	+113

• Pasture service sire on the spring bred heifers.

E

CMCC DA *Cowboy Points* 695C

bull

3/2/16 • 43772708 • tattoo: LE 695D • horned

UPS DOMINO 3027 {CHB,SOD}

CHURCHILL SENSATION 028X {SOD}

CHURCHILL LADY 7202T ET

• {DLF,HYF,IEF}

NJW 98S R117 RIBEYE 88X ET {SOD,CHB}

HAPP GAME POINT 14B

CRANE STYLE POINTS 945

CL 1 DOMINO 9126J 1ET {SOD}

UPS MISS DIAMOND 1353

GH RAMBO 279R {CHB,SOD}

CL 1 DOMINETTE 301N

SHF RIB EYE M326 R117 {CHB,SOD}

NJW 9126J DEW DOMINO 98S {DOD}

CH 372 POT OF GOLD 7120 ET

CH MISS DIAL 6311

CED	BW	WW	YW	MILK	CW	REA	MARB	\$CHB
+6.2	+1.3	+52	+82	+30	55	+4.3	+1.9	+107

• Happ herd sire, now deceased.

C

CRR 322 *Bell* 617

bull

2/11/16 • P43694053 • tattoo: BE 617 • polled

CRR 719 CATAPULT 109 {SOD}

CRR 109 CATAPULT 322

CRR 713 KELLY 0117

• {DLF,HYF,IEF,MSUDF}

BOYD WORLDWIDE 9050 ET {SOD}

BRL WHIRL 59A

BRL ENVY 059Y

TH 122 711 VICTOR 719T {SOD}

CRR 4037 ECLIPSE 808

CRR 63J KODIAK 713

CRR 9B KELLY 521 {DOD}

SHF RIB EYE M326 R117 {CHB,SOD}

MSU TCF RACHAEL 22S ET

CRR 719 TULO 928 {SOD}

BRL CALL GIRL 059R

CED	BW	WW	YW	MILK	CW	REA	MARB	\$CHB
+4.2	-0.2	+46	+69	+20	+48	+35	+1.5	+95

• Happ herd sire.

F

UPS *Sensation* 2296 ET

bull

4/11/12 • 43311175 • tattoo: LE 2296 • horned

UPS DOMINO 3027 {CHB,SOD}

CHURCHILL SENSATION 028X {SOD}

CHURCHILL LADY 7202T ET

• {DLF,HYF,IEF,MSUDF,MDF}

GH NEON 17N {CHB,SOD}

UPS JT MISS NEON 7811 1ET

LCC TWO TIMIN 438 ET

CL 1 DOMINO 9126J 1ET {SOD}

UPS MISS DIAMOND 1353

GH RAMBO 279R {CHB,SOD}

CL 1 DOMINETTE 301N

GH DIFFERENCE BRITISHER 45L {CHB}

GH SIR SIMBA LASS 107K

REMITALL ONLINE 122L {CHB,SOD}

RST ROF REBA 28H

CED	BW	WW	YW	MILK	CW	REA	MARB	\$CHB
+8.7	+1.7	+60	+91	+39	+64	+6.4	+0.1	+98

• Used AI.

AI Service Sires Represented

— for reference only —



BOYD 31Z BLUEPRINT 6153



T/R BPF AMERICAN CLASSIC
561C ET



K RUSTIC 711 ET



KLD RW MARKSMAN D87 ET

G

Boyd 31Z *Blueprint* 6153

bull

10/4/16 • P43764491 • tattoo: BE 6153 • hom. polled

HYALITE ON TARGET 936 {SOD}

R LEADER 6964

R MISS REVOLUTION 1009 {DOD}

• {DLF,HYF,IEF,MSUDF,MDF}

NJW 73S M326 TRUST 100W ET {SOD,CHB}

NJW 91H 100W RITA 31Z ET

REMITALL RITA 91H

SCHU-LAR ON TARGET 22S {SOD,CHB}

HYALITE TS LASS 310

MSU TCF REVOLUTION 4R {SOD}

R MISS WRANGLER 3007

KCF BENNETT 3008 M326 {CHB,SOD}

NJW P606 72N DAYDREAM 73S

FELTONS 517 {SOD}

REMITALL FLORIAL RITA 102F

CED	BW	WW	YW	MILK	CW	REA	MARB	SCHB
+13.4	+0.8	+59	+93	+25	+62	+36	.00	+108

• Homozygous polled. Used AI.

J

K *Rustic* 711 ET

bull

2/28/17 • 43848894 • tattoo: BE 711 • horned

DKF RO CASH FLOW 0245 ET {SOD}

ECR WHO MAKER 210 ET

RV GOLDEN LADY 5064

• {DLF,HYF,IEF,MSUDF}

C MILES MCKEE 2103 ET {SOD,CHB}

SULL TCC HARLEY 4069B ET

LCC TWO TIMIN 438 ET

CRR ABOUT TIME 743 {SOD}

JRR MISS TOBEY 711T

K&B DOMINO 2570

RV MS GOLD DUST 3064 {DOD}

NJW 98S R117 RIBEYE 88X ET {SOD,CHB}

C NOTICE ME ET

REMITALL ONLINE 122L {CHB,SOD}

RST ROF REBA 28H

CED	BW	WW	YW	MILK	CW	REA	MARB	SCHB
+1.4	+2.7	+51	+90	+40	+86	+82	+0.7	+150

• Used AI.

H

T/R BPF *American Classic* 561C ET

bull

3/5/15 • P43645392 • tattoo: LE 561C • polled

DKF RO CASH FLOW 0245 ET {SOD}

ECR WHO MAKER 210 ET

RV GOLDEN LADY 5064

• {DLF,HYF,IEF,MSUDP}

LAGRAND RELOAD 80P ET {SOD,CHB}

TFR PARIS 415 ET

CRR D03 COTTON 356

CRR ABOUT TIME 743 {SOD}

JRR MISS TOBEY 711T

K&B DOMINO 2570

RV MS GOLD DUST 3064 {DOD}

AA PRF WIDELOAD {SOD}

TSF MS KEYNOTE 729

SHF INTERSTATE 20X D03 {SOD}

CRR 651 COTTON 972

CED	BW	WW	YW	MILK	CW	REA	MARB	SCHB
-7.4	+5.9	+55	+94	+28	+83	+74	-.01	+127

• Used AI.

K

KLD RW *Marksman* D87 ET

bull

3/26/18 • P43951713 • tattoo: BE D87 • polled

CHURCHILL SENSATION 028X {SOD}

UPS SENSATION 2296 ET

UPS JT MISS NEON 7811 1ET

• {DLF,HYF,IEF,MSUDF}

RW KW HUMMER K23 3078

RW MINDY 3078 6096

RW DEDE 23C 9145

UPS DOMINO 3027 {CHB,SOD}

CHURCHILL LADY 7202T ET

GH NEON 17N {CHB,SOD}

LCC TWO TIMIN 438 ET

-S CORANADO 2E K23

RW CHRISTY F600

JSF 37 271 DEVO 23C {SOD}

WPH MISS BUTLER 10Z

CED	BW	WW	YW	MILK	CW	REA	MARB	SCHB
-0.6	+4.3	+54	+84	+31	+57	+51	-.03	+86

• Used AI.

I

KJ BJ 58Z *Contender* D56 ET

bull

9/10/16 • 43770756 • tattoo: BE D56 • horned

CHURCHILL SENSATION 028X {SOD}

UPS SENSATION 2296 ET

UPS JT MISS NEON 7811 1ET

• {CHB,DLF,HYF,IEF,MSUDF}

FELTONS LEGEND 242 {SOD}

MSU RACHAEL 58Z ET

MSU TCF RACHAEL ET 54N

UPS DOMINO 3027 {CHB,SOD}

CHURCHILL LADY 7202T ET

GH NEON 17N {CHB,SOD}

LCC TWO TIMIN 438 ET

FELTONS DOMINO 774 {SOD}

FELTONS G15

REMITALL ONLINE 122L {CHB,SOD}

HH MISS ADV 786G 1ET

CED	BW	WW	YW	MILK	CW	REA	MARB	SCHB
+6.6	+2.0	+61	+89	+28	80	+68	+15	+126

• Used AI.

L

Purple *Reuben James* 40A ET

bull

3/6/13 • 43406996 • tattoo: LE 40A • horned

CRR ABOUT TIME 743 {SOD}

TH 89T 743 UNTAPPED 425X ET

TH 16G 20N GEMINI 89T

• {DLF,HYF,IEF}

JCS SHOWTIME

PURPLE RRO RUBY 41X

PURPLE CLOVER L25T

THM DURANGO 4037 {SOD}

CRR D03 CASSIE 206

NPH 20X SPARTAN 20N {SOD}

TEE-JAY 707B GEMINI 16G ET

CHURCHILL ROYAL 112

JCS 184 DOMINETTE 499

PURPLE TONIC 10M

PURPLE ESTELLE 2R ET

CED	BW	WW	YW	MILK	CW	REA	MARB	SCHB
+3.8	+2.1	+55	+77	+15	+73	+47	+10	+115

• Used AI.



23817 Meridian Rd.
Mendota, IL 61342

FIRST CLASS MAIL

TIME SENSITIVE: PLEASE DO NOT DELAY

PRE-SORTED
FIRST CLASS
U.S. POSTAGE
PAID
SLATE GROUP

Happ Herefords

FEMALE SALE • VOL. III

1 p.m. CDT, Sunday, September 12th • Mendota, Illinois

elite champions + foundation genetics



45 Hereford lots

LiveAuctionsTV

Elite Show Heifer Prospects & Future Donors • Proven Donors & Frozen Genetics

Fall Bred Heifer • Spring Pair Splits & 3-in-1s • Spring Bred Heifers

